



# Lower Interest Rates Available!

Flex Allowance to use YOUR way on select Quick Delivery Homes

**Lower Interest Rate Available\***



## 412 Puppy Dog Pass

San Marcos, TX 78666 | MLS #4379617

**\$519,990**

|              | Beds     | Baths      | Stories  | Garage   |
|--------------|----------|------------|----------|----------|
| <b>2,749</b> | <b>4</b> | <b>3.5</b> | <b>1</b> | <b>3</b> |

**This move-in ready gem is an exceptional find! With up to \$20,000 available in flex cash allowance, plus up to an additional \$7,000 in closing cost contributions with our preferred lender, now is the perfect time to make this exquisite... READ MORE »**

## Plan Your Visit

La Cima 50' Model  
Umbria Plan  
209 Missouri Primrose Lane  
San Marcos, TX 78666

MODEL HOME HOURS  
Monday to Saturday: 10 a.m. - 6 p.m.  
Sunday: 12 p.m. - 6 p.m.

Community Sales Manager  
Thomas Serhus  
(713) 302-3050  
[tserhus@newmarkhomes.com](mailto:tserhus@newmarkhomes.com)



**ELEVATION 1**



**ELEVATION 2**



**ELEVATION 3**



**ELEVATION 4**



**ELEVATION 5**

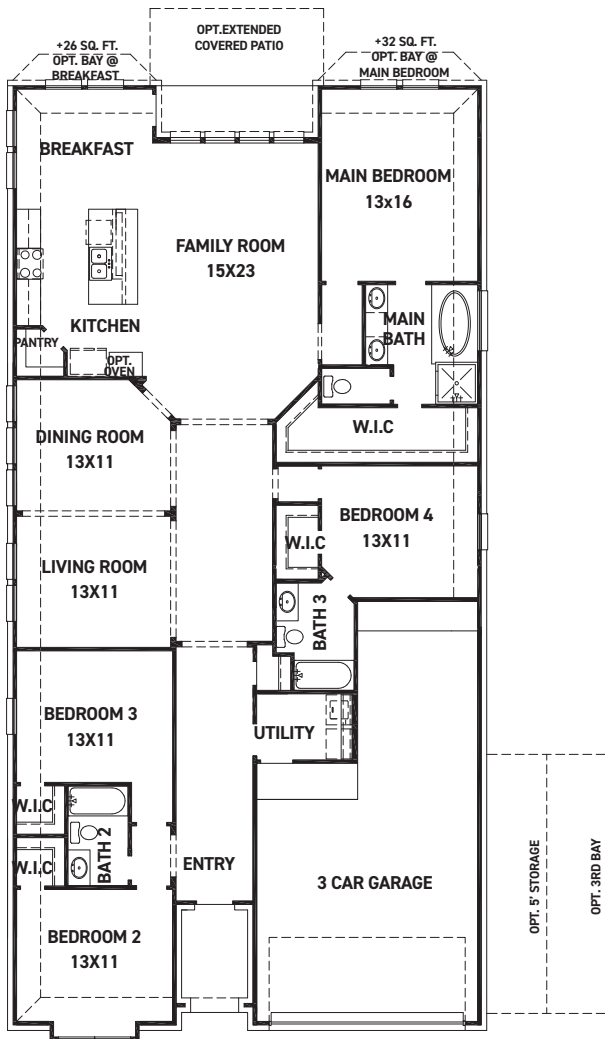
REV 07/23 (5014)A



These drawings are conceptual only and are for the convenience of reference. They should not be relied upon as representations, express or implied, of the final detail of the residences. The builder expressly reserves the right to make modifications, revisions, and changes it deems desirable in its sole and absolute discretion. Dimensions and square footages are approximate and may vary with actual construction. Due to design and footage requirements not all options/elevations are available in all locations.



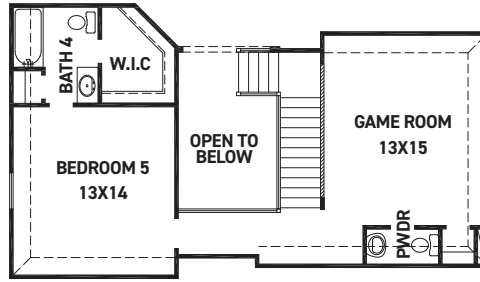
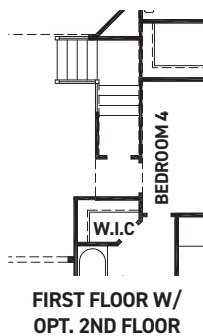
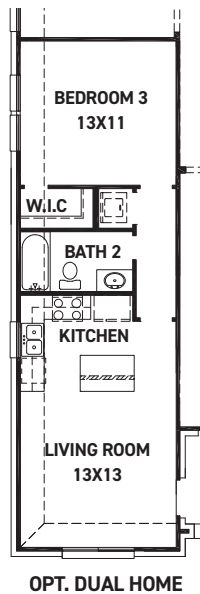
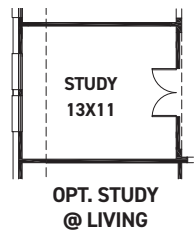
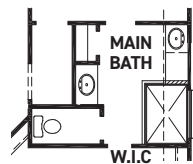
[newmarkhomes.com](http://newmarkhomes.com)



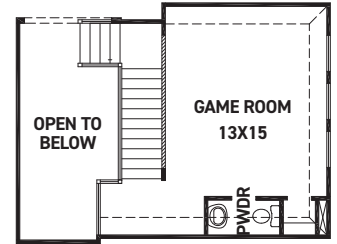
FIRST FLOOR PLAN

### FEATURES:

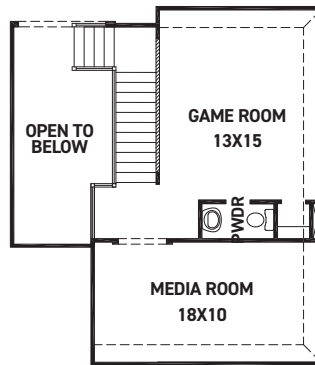
- 2,449 SQUARE FT.
- 4 BEDROOM
- 3 BATHROOM
- 3 CAR GARAGE



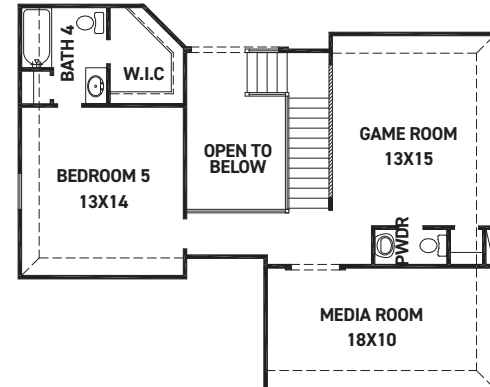
OPT. SECOND FLOOR  
GAME ROOM & BEDROOM 5/BATH 4  
+643 SQ. FT.



OPT. SECOND FLOOR  
GAME ROOM  
+302 SQ. FT.



OPT. SECOND FLOOR  
GAME ROOM & MEDIA  
+502 SQ. FT.



OPT. SECOND FLOOR GAME ROOM, MEDIA,  
& BEDROOM 5/BATH 4  
+843 SQ. FT.

REV 07/23 (5014)A



These drawings are conceptual only and are for the convenience of reference. They should not be relied upon as representations, express or implied, of the final detail of the residences. The builder expressly reserves the right to make modifications, revisions, and changes it deems desirable in its sole and absolute discretion. Dimensions and square footages are approximate and may vary with actual construction. Due to design and footage requirements not all options/elevations are available in all locations.



[newmarkhomes.com](http://newmarkhomes.com)