

Up to 20k Flex Allowance



5202 Murillo Drive

Iowa Colony, TX 77583 | MLS #90291274
\$363,858

Sq Ft	Beds	Baths	Stories	Garage
1,429	3	2	1	2

Welcome home to Newmark Homes in Meridiana! This stunning Violet floor plan has 3 bedrooms, 2 baths and 2-car garage. This home boasts a massive family room that is open to the Kitchen, perfect for entertaining! The kitchen island is a... [READ MORE »](#)

Plan Your Visit

Meridiana 40' Model
Bluebell Plan
Ask Us About Our Up To 20k Flex Allowance!

5311 Majestic Court
Manvel, TX 77578

MODEL HOME HOURS
Monday to Saturday: 10 a.m. - 6 p.m.
Sunday: 12 p.m. - 6 p.m.

Community Sales Manager
Aness Al Dahan
(346) 730-5459
aaldahan@newmarkhomes.com
Rene Bingle
512-903-2681
rbingle@newmarkhomes.com



ELEVATION 1



ELEVATION 2



ELEVATION 3

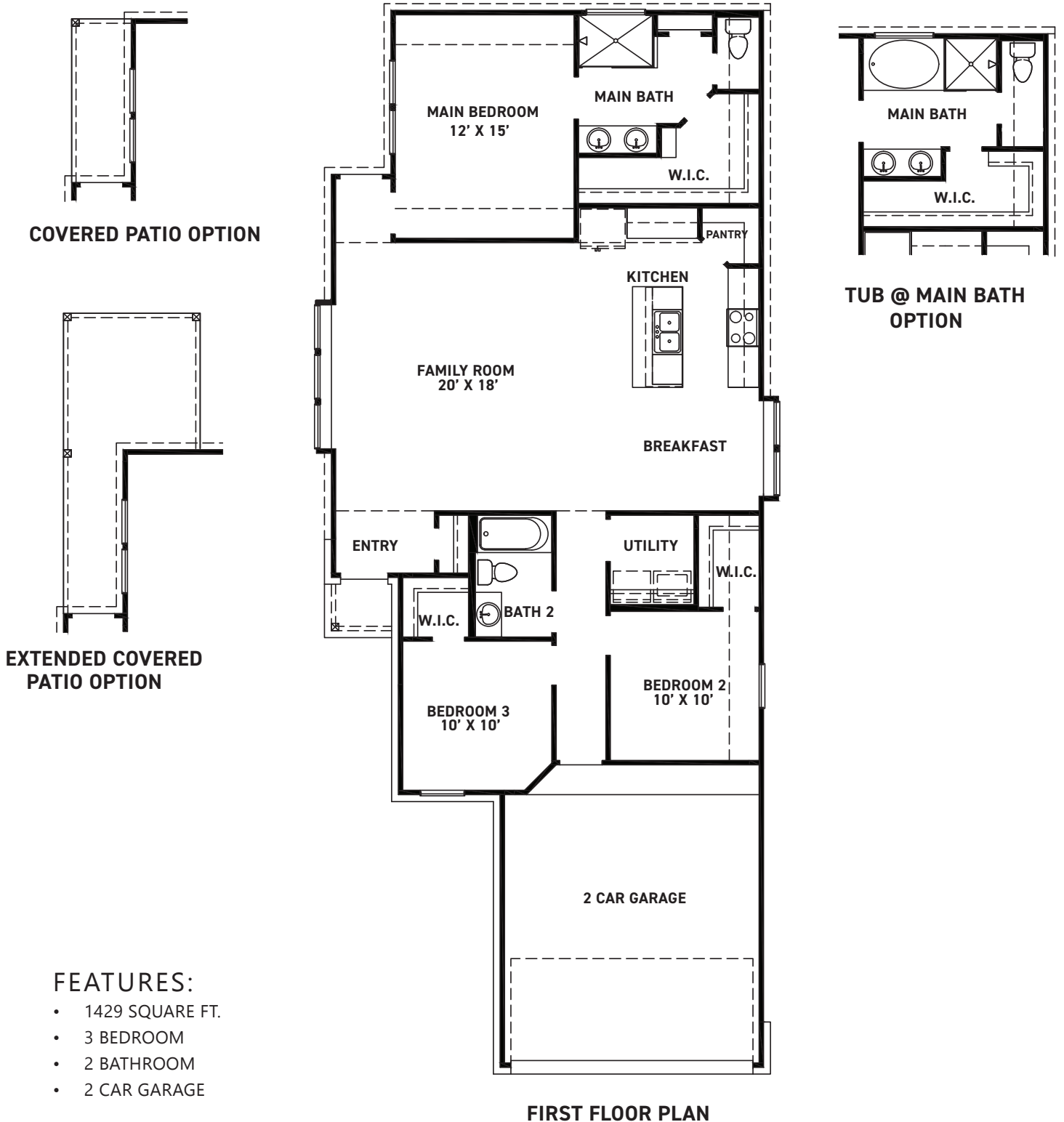
REV 10/24 (4



These drawings are conceptual only and are for the convenience of reference. They should not be relied upon as representations, express or implied, of the final detail of the residences. The builder expressly reserves the right to make modifications, revisions, and changes it deems desirable in its sole and absolute discretion. Dimensions and square footages are approximate and may vary with actual construction.



newmarkhomes.com



FEATURES:

- 1429 SQUARE FT.
- 3 BEDROOM
- 2 BATHROOM
- 2 CAR GARAGE

REV 10/24 (401A)



These drawings are conceptual only and are for the convenience of reference. They should not be relied upon as representations, express or implied, of the final detail of the residences. The builder expressly reserves the right to make modifications, revisions, and changes it deems desirable in its sole and absolute discretion. Dimensions and square footages are approximate and may vary with actual construction.



newmarkhomes.com