



5138 Sistine Drive

Iowa Colony, TX 77583 | MLS #8218331
\$405,000

Sq Ft	Beds	Baths	Stories	Garage
2,080	4	2.5	2	2

Welcome to Newmark Homes in Meridiana! This is our Paintbrush plan elevation 2. Enjoy the together time in the family room, breakfast and kitchen area with this open floor plan. Roomy Main Suite with walk-in closet, dual sinks and garde... [READ MORE »](#)

Plan Your Visit

Meridiana 40' Model
Bluebell Plan
Model Now Open!
5311 Majestic Court
Manvel, TX 77578

MODEL HOME HOURS
Monday to Saturday: 10 a.m. - 6 p.m.
Sunday: 12 p.m. - 6 p.m.

Community Sales Manager
Rene Bingle
[512-903-2681](tel:512-903-2681)
rbingle@newmarkhomes.com



ELEVATION 1



ELEVATION 2



ELEVATION 3

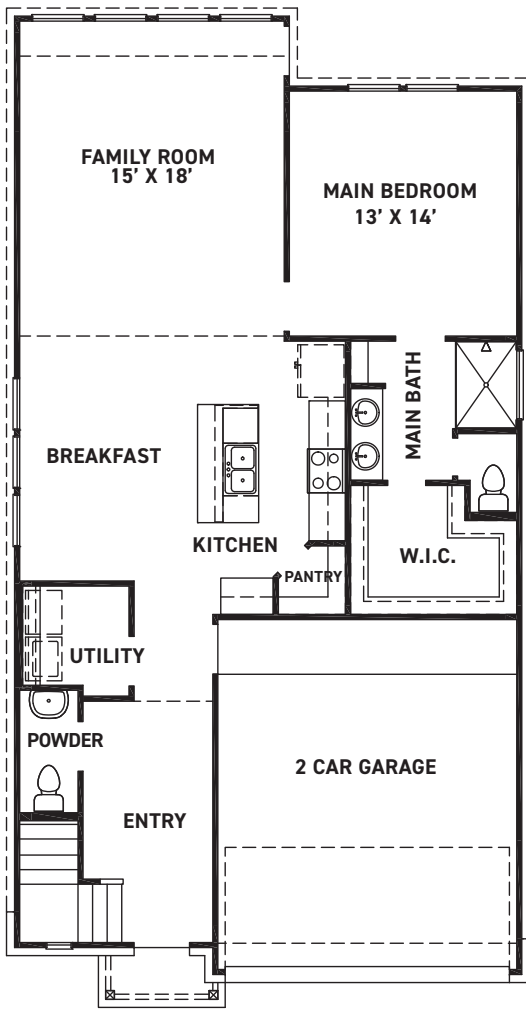
REV 1/22 (4026)



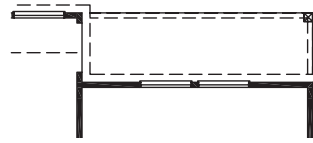
These drawings are conceptual only and are for the convenience of reference. They should not be relied upon as representations, express or implied, of the final detail of the residences. The builder expressly reserves the right to make modifications, revisions, and changes it deems desirable in its sole and absolute discretion. Dimensions and square footages are approximate and may vary with actual construction.



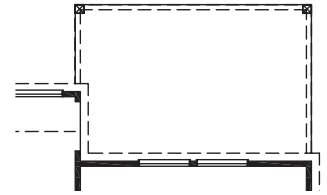
newmarkhomes.com



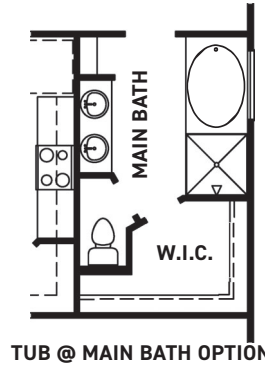
FIRST FLOOR PLAN



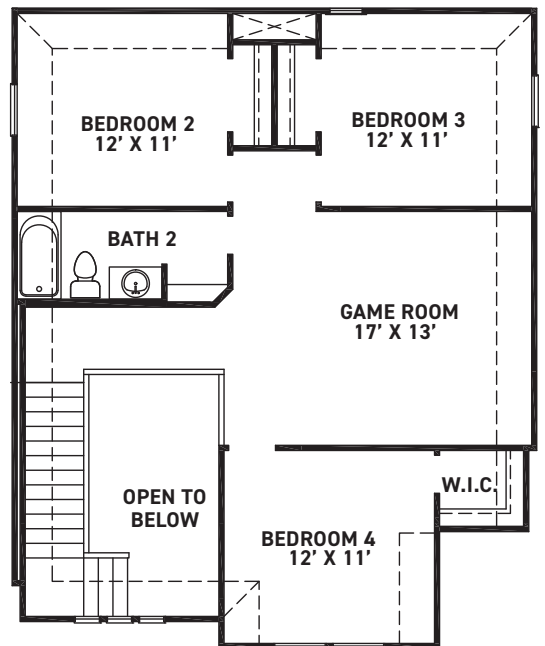
COVERED PATIO OPTION



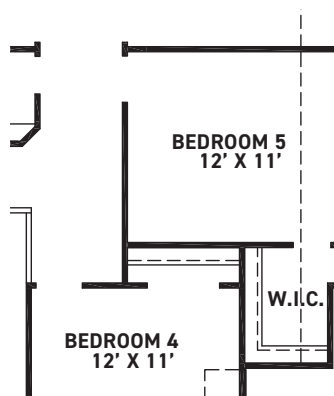
EXTENDED COVERED PATIO OPTION



TUB @ MAIN BATH OPTION



SECOND FLOOR PLAN



BEDROOM 5 ILO GAME ROOM

FEATURES:

- 2080 SQUARE FT.
- 4 BEDROOM
- 2-1/2 BATHROOM
- 2 CAR GARAGE

REV 1/22 (402G)



These drawings are conceptual only and are for the convenience of reference. They should not be relied upon as representations, express or implied, of the final detail of the residences. The builder expressly reserves the right to make modifications, revisions, and changes it deems desirable in its sole and absolute discretion. Dimensions and square footages are approximate and may vary with actual construction.



newmarkhomes.com