

Open House



31407 Warm Kindling Way

Fulshear, TX 77441 | MLS #45736675
\$522,000

Sq Ft	Beds	Baths	Stories	Garage
2,833	5	4.5	2	2

Brand new NEWMARK HOME in the highly anticipated CROSS CREEK WEST community. The modern masterpiece HEIDELBERG offers 5 bedrooms w/ 2 private suites down & 4.5 baths on a cul-de-sac homesite WALKING DISTANCE to the upcoming elementary.... [READ MORE »](#)

Open House Showings

Saturday

September 28

1:00 PM - 5:00 PM

Sunday

September 29

1:00 PM - 5:00 PM

Plan Your Visit

Cross Creek West 50' Model
Linz Plan
Model Home NOW OPEN!
31518 Bramble Hollow Court
Fulshear, TX 77441

MODEL HOME HOURS
Monday to Saturday: 10 a.m. - 6 p.m.
Sunday: 12 p.m. - 6 p.m.

Community Sales Manager
Andrew Turco
(713) 825-4914
aturco@newmarkhomes.com



ELEVATION 1



ELEVATION 2



ELEVATION 3



ELEVATION 4

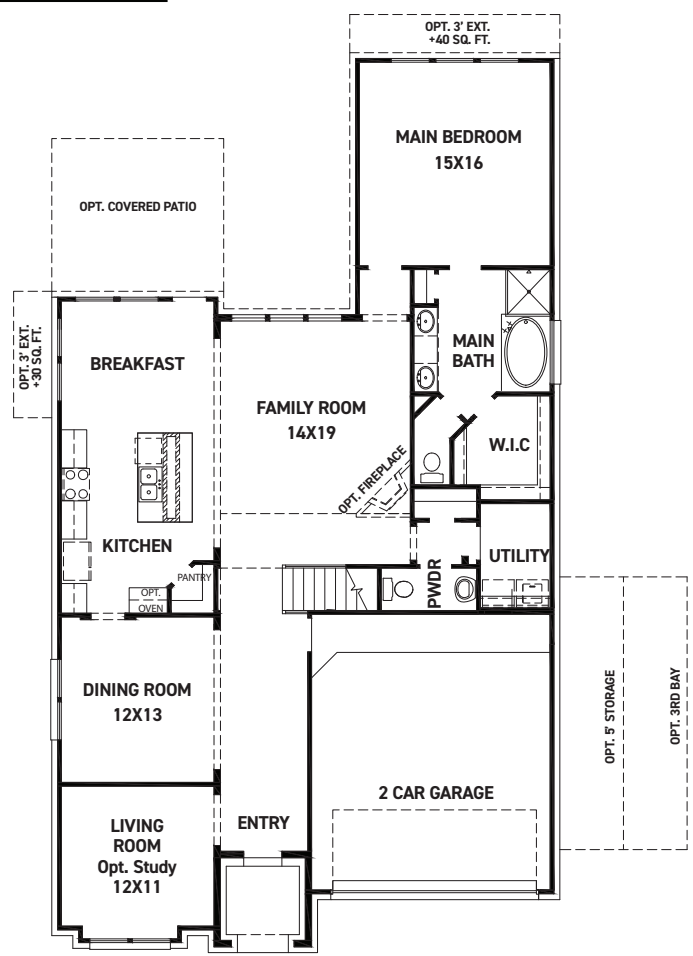
REV 06/24 (501



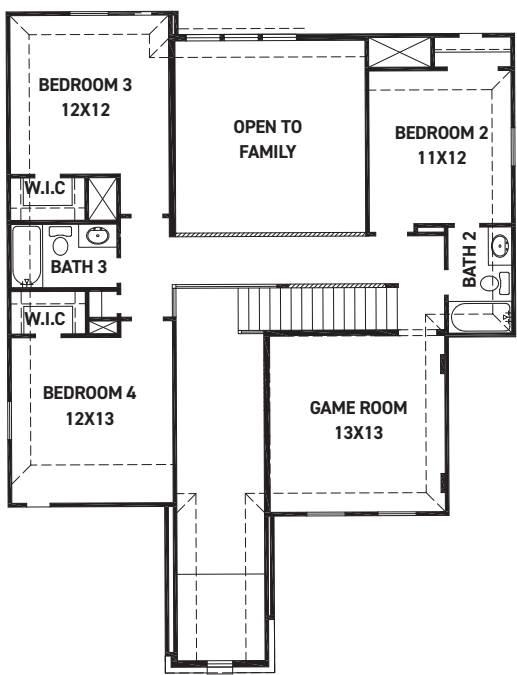
These drawings are conceptual only and are for the convenience of reference. They should not be relied upon as representations, express or implied, of the final detail of the residences. The builder expressly reserves the right to make modifications, revisions, and changes it deems desirable in its sole and absolute discretion. Dimensions and square footages are approximate and may vary with actual construction.



newmarkhomes.com



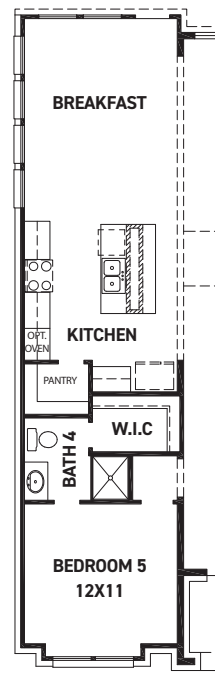
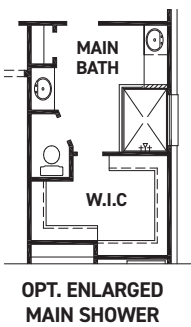
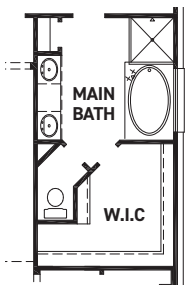
FIRST FLOOR PLAN



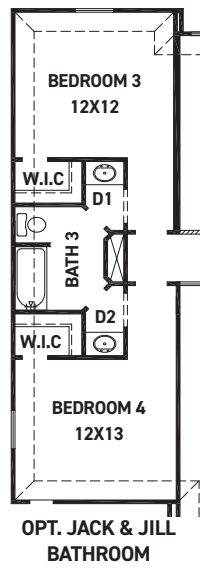
SECOND FLOOR PLAN

FEATURES:

- 2,799 SQUARE FT.
- 4 BEDROOM
- 3 1/2 BATHROOM
- 2 CAR GARAGE



OPT. BEDROOM 5 W/ BATH 4 & EXTENDED BREAKFAST



REV 06/24 (50



These drawings are conceptual only and are for the convenience of reference. They should not be relied upon as representations, express or implied, of the final detail of the residences. The builder expressly reserves the right to make modifications, revisions, and changes it deems desirable in its sole and absolute discretion. Dimensions and square footages are approximate and may vary with actual construction.



newmarkhomes.com