

Just Reduced



5126 Murillo Drive

Iowa Colony, TX 77583 | MLS #39316987
\$369,000

Sq Ft	Beds	Baths	Stories	Garage
1,631	3	2	1	2

Welcome to Newmark Homes in Meridiana! This is our gorgeous Honeysuckle Plan elevation 1. 3 Bedroom and 2 bathroom with a tub. Enjoy outdoor entertainment on those summer days with an extended covered patio.

Plan Your Visit

Meridiana 40' Model
Bluebell Plan
Ask Us About Our Up To 20k Flex Allowance!

5311 Majestic Court
Manvel, TX 77578

MODEL HOME HOURS
Monday to Saturday: 10 a.m. - 6 p.m.
Sunday: 12 p.m. - 6 p.m.

Community Sales Manager
Rene Bingle
[512-903-2681](tel:512-903-2681)
rbingle@newmarkhomes.com
Aness Al Dahan
[\(346\) 730-5459](tel:346-730-5459)
aaldahan@newmarkhomes.com



ELEVATION 1



ELEVATION 2



ELEVATION 3

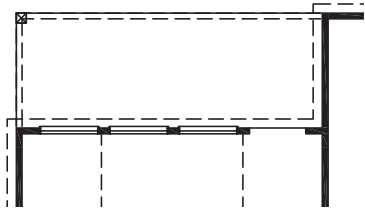
REV 1/22 (401B)



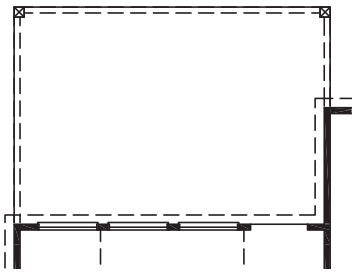
These drawings are conceptual only and are for the convenience of reference. They should not be relied upon as representations, express or implied, of the final detail of the residences. The builder expressly reserves the right to make modifications, revisions, and changes it deems desirable in its sole and absolute discretion. Dimensions and square footages are approximate and may vary with actual construction.



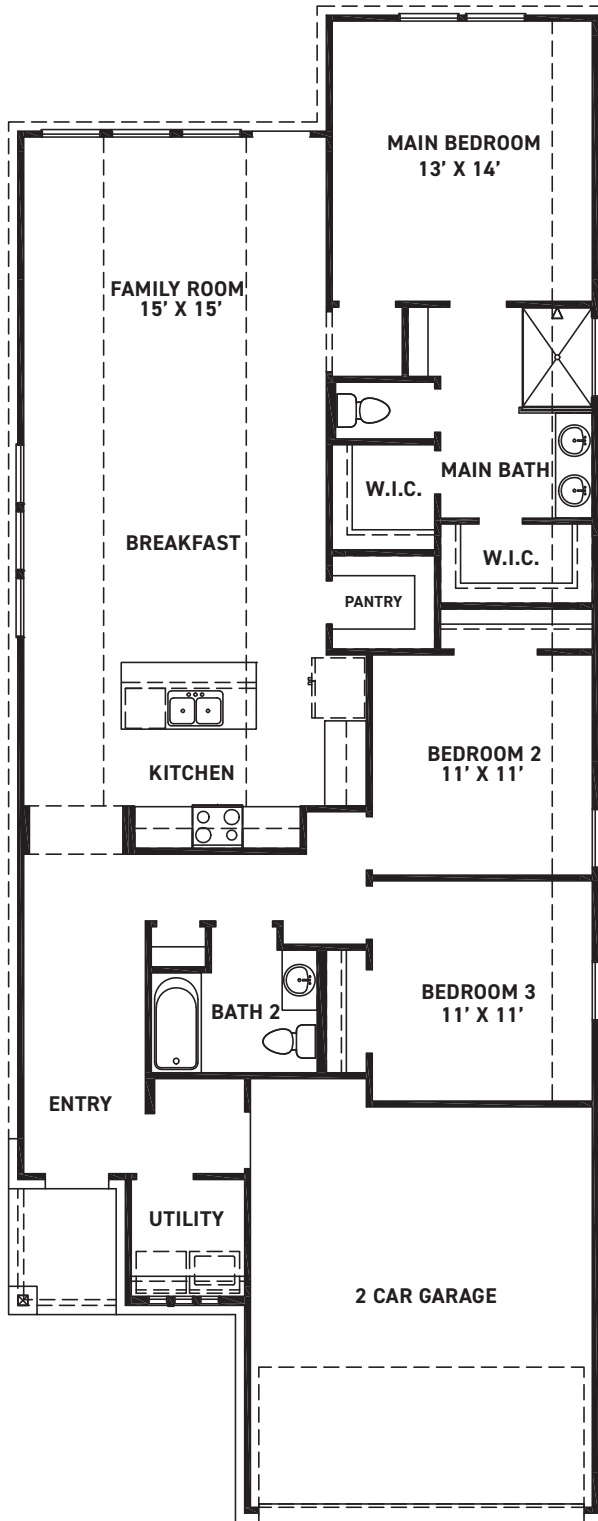
newmarkhomes.com



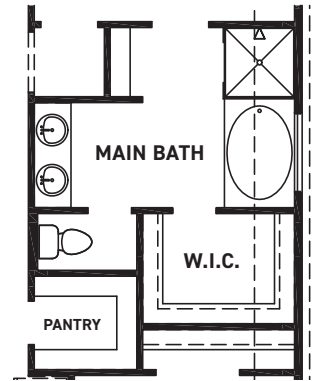
COVERED PATIO OPTION



EXTENDED COVERED PATIO OPTION



FIRST FLOOR PLAN



TUB @ MAIN BATH OPTION

FEATURES:

- 1631 SQUARE FT.
- 3 BEDROOM
- 2 BATHROOM
- 2 CAR GARAGE

REV 1/22 (401B)



These drawings are conceptual only and are for the convenience of reference. They should not be relied upon as representations, express or implied, of the final detail of the residences. The builder expressly reserves the right to make modifications, revisions, and changes it deems desirable in its sole and absolute discretion. Dimensions and square footages are approximate and may vary with actual construction.



newmarkhomes.com