

Up to 20k Flex Allowance



Plan Your Visit

18310 Lilac Woods Trail

Cypress, TX 77433 | MLS #13723908
\$514,677

Sq Ft	Beds	Baths	Stories	Garage
2,481	4	3	2	2

The Archer model truly offers a blend of functionality and luxury. With its four bedrooms, including two downstairs and two upstairs, three full baths, spacious chef's kitchen with a center island, open concept floor plan, casual eatin...
[READ MORE »](#)



ELEVATION A



ELEVATION B



ELEVATION C



ELEVATION D



ELEVATION E

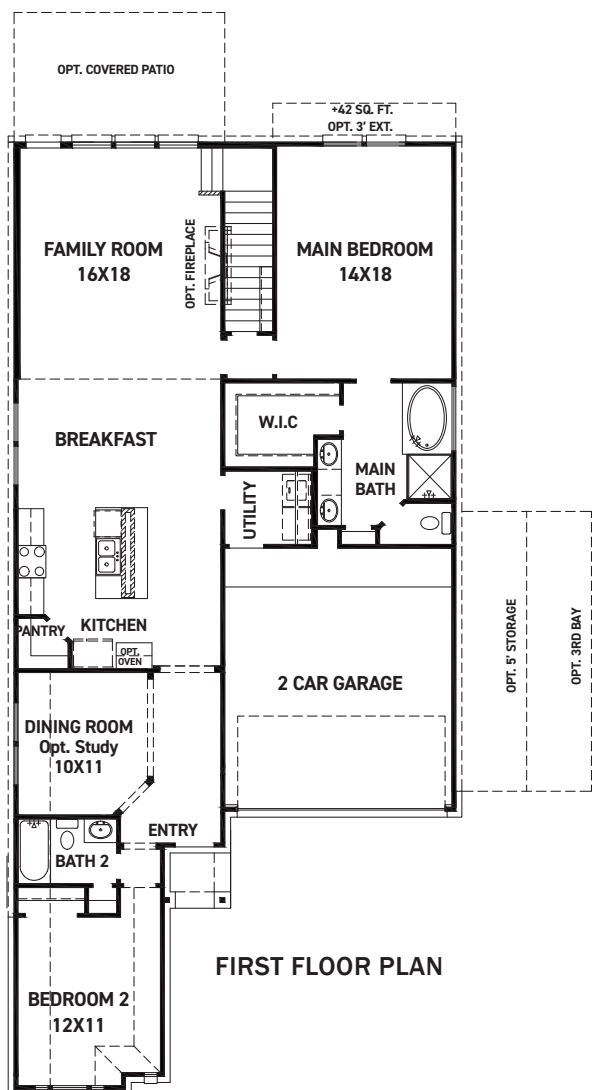
REV 04/24 (45)



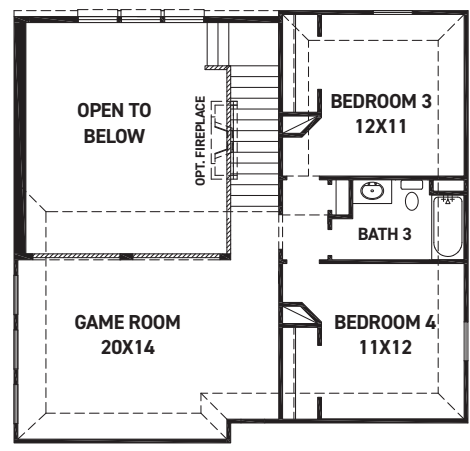
These drawings are conceptual only and are for the convenience of reference. They should not be relied upon as representations, express or implied, of the final detail of the residences. The builder expressly reserves the right to make modifications, revisions, and changes it deems desirable in its sole and absolute discretion. Dimensions and square footages are approximate and may vary with actual construction. Due to design and footage requirements not all options/elevations are available in all locations.



newmarkhomes.com



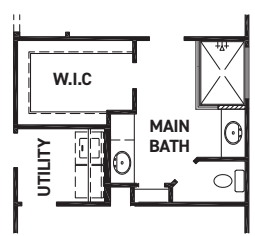
FIRST FLOOR PLAN



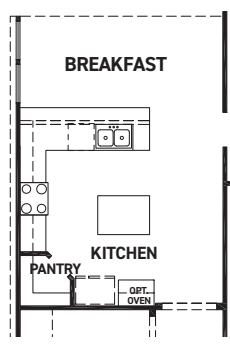
SECOND FLOOR PLAN

FEATURES:

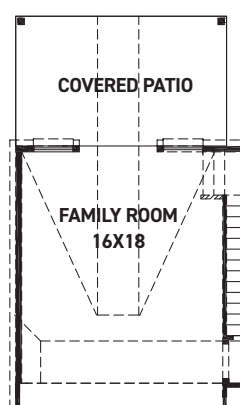
- 2,481 SQUARE FT.
- 4 BEDROOM
- 3 BATHROOM
- 2 CAR GARAGE



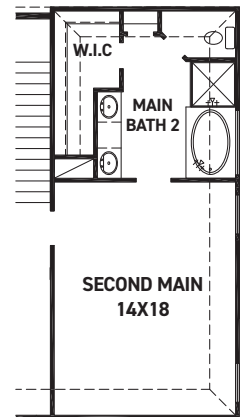
OPT. ENLARGED MAIN SHOWER



KITCHEN UPGRADE 2



OPT. COVERED PATIO W/ OPT. POINTED VAULT OR OPT. ARCHED VAULT



OPT. SECOND MAIN W/BATH

REV 04/24 (45



These drawings are conceptual only and are for the convenience of reference. They should not be relied upon as representations, express or implied, of the final detail of the residences. The builder expressly reserves the right to make modifications, revisions, and changes it deems desirable in its sole and absolute discretion. Dimensions and square footages are approximate and may vary with actual construction. Due to design and footage requirements not all options/elevations are available in all locations.



newmarkhomes.com