



# 29722 Loblolly View Lane

Fulshear, TX 77441 | MLS #10381293  
\$908,191

Sq Ft	Beds	Baths	Stories	Garage
<b>3,768</b>	<b>4</b>	<b>4.5</b>	<b>1</b>	<b>3</b>

NEWMARK HOMES - AMALFI - Welcome to this very impressive popular one-story home. Open - bright and modern with spectacular 14' ceilings. Formal Dining Room - Private Study, fabulous chefs' kitchen offering porcelain countertops, upgrad... [READ MORE »](#)

## Plan Your Visit

Cross Creek Ranch 70' Model  
Amalfi Plan  
Model Now Open  
29818 Aaron River Trail  
Fulshear, TX 77441

---

MODEL HOME HOURS  
Monday to Saturday: 10 a.m. - 6 p.m.  
Sunday: 12 p.m. - 6 p.m

---

Community Sales Manager  
Merri Turco  
(281) 413-0216  
[mturco@newmarkhomes.com](mailto:mturco@newmarkhomes.com)

---



**ELEVATION 1**



**ELEVATION 2**



**ELEVATION 3**



**ELEVATION 4**



**ELEVATION 5**



**ELEVATION 6**

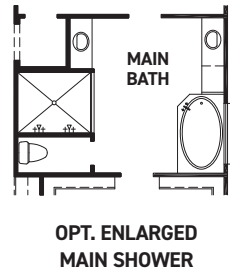
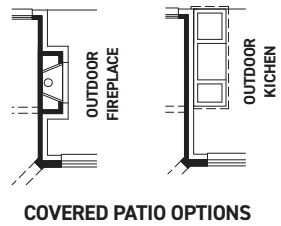
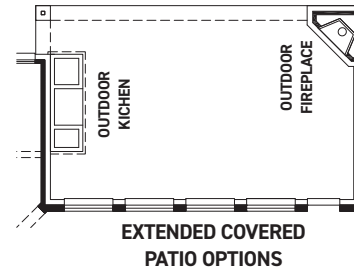
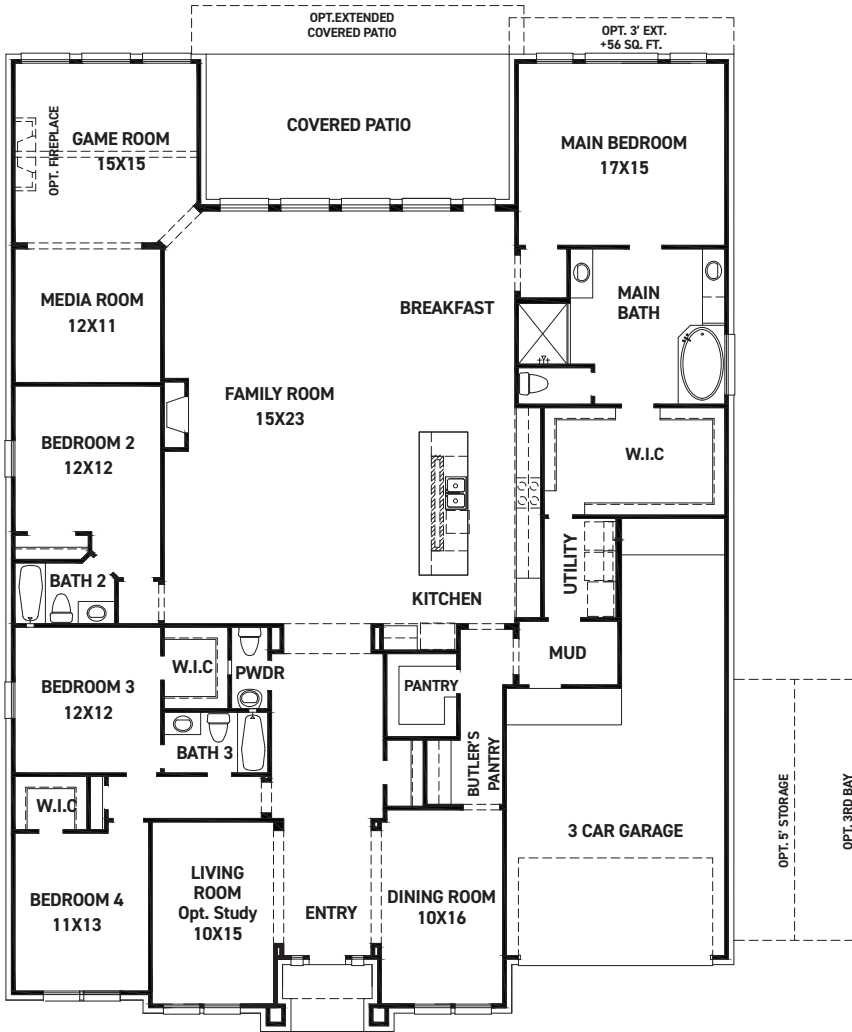
REV 04/24 (7)



These drawings are conceptual only and are for the convenience of reference. They should not be relied upon as representations, express or implied, of the final detail of the residences. The builder expressly reserves the right to make modifications, revisions, and changes it deems desirable in its sole and absolute discretion. Dimensions and square footages are approximate and may vary with actual construction. Due to design and footage requirements not all options/elevations are available in all locations.



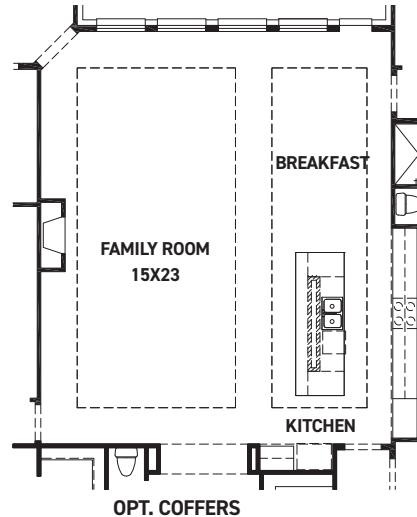
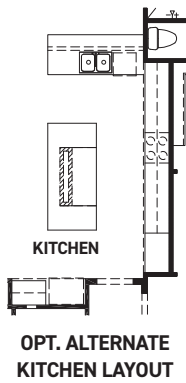
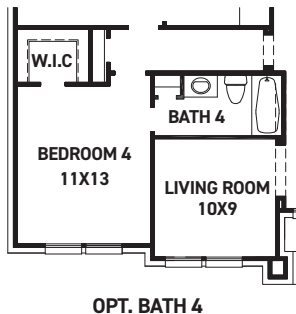
[newmarkhomes.com](http://newmarkhomes.com)



**FIRST FLOOR PLAN**

**FEATURES:**

- 3,768 SQUARE FT.
- 4 BEDROOM
- 3 1/2 BATHROOM
- 3 CAR GARAGE



REV 04/24 (70



These drawings are conceptual only and are for the convenience of reference. They should not be relied upon as representations, express or implied, of the final detail of the residences. The builder expressly reserves the right to make modifications, revisions, and changes it deems desirable in its sole and absolute discretion. Dimensions and square footages are approximate and may vary with actual construction. Due to design and footage requirements not all options/elevations are available in all locations.



[newmarkhomes.com](http://newmarkhomes.com)