



# 10206 Van Gogh Court

Iowa Colony, TX 77583 | MLS #33820280  
\$415,000

Sq Ft	Beds	Baths	Stories	Garage
<b>2,082</b>	<b>3</b>	<b>2.5</b>	<b>2</b>	<b>2</b>

This is our Rain Lily plan with 3 bedrooms 2 ½ baths. Enjoy the together time in the family room, breakfast, and kitchen area with this open floor plan. Roomy main suite with walk-in closet, dual sinks and garden tub for a nice soak af...  
[READ MORE »](#)

## Plan Your Visit

Meridiana 40' Model  
Bluebell Plan  
Ask Us About Our Up To 20k Flex Allowance!

5311 Majestic Court  
Manvel, TX 77578

---

MODEL HOME HOURS  
Monday to Saturday: 10 a.m. - 6 p.m.  
Sunday: 12 p.m. - 6 p.m.

---

Community Sales Manager  
Rene Bingle  
[512-903-2681](tel:512-903-2681)  
[rbingle@newmarkhomes.com](mailto:rbingle@newmarkhomes.com)  
Aness Al Dahan  
[\(346\) 730-5459](tel:346-730-5459)  
[aaldahan@newmarkhomes.com](mailto:aaldahan@newmarkhomes.com)

---



**ELEVATION 1**



**ELEVATION 2**



**ELEVATION 3**

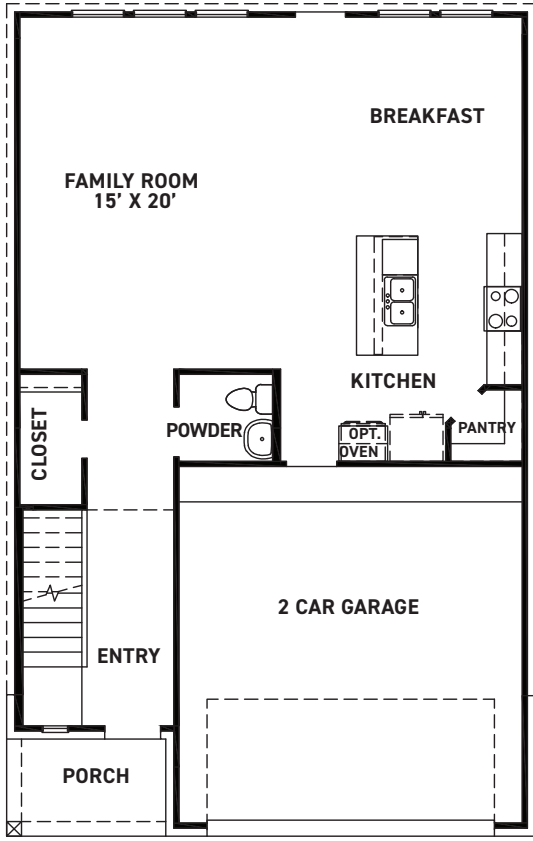
REV 12/24 (401F)



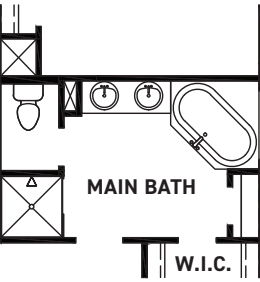
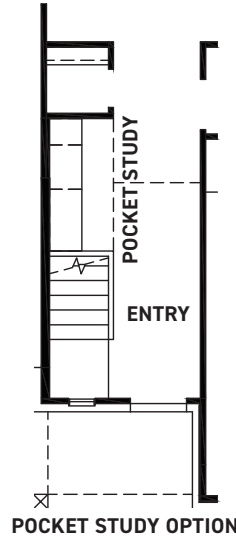
These drawings are conceptual only and are for the convenience of reference. They should not be relied upon as representations, express or implied, of the final detail of the residences. The builder expressly reserves the right to make modifications, revisions, and changes it deems desirable in its sole and absolute discretion. Dimensions and square footages are approximate and may vary with actual construction.



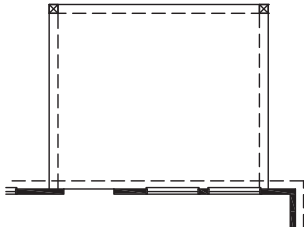
[newmarkhomes.com](http://newmarkhomes.com)



**FIRST FLOOR PLAN**



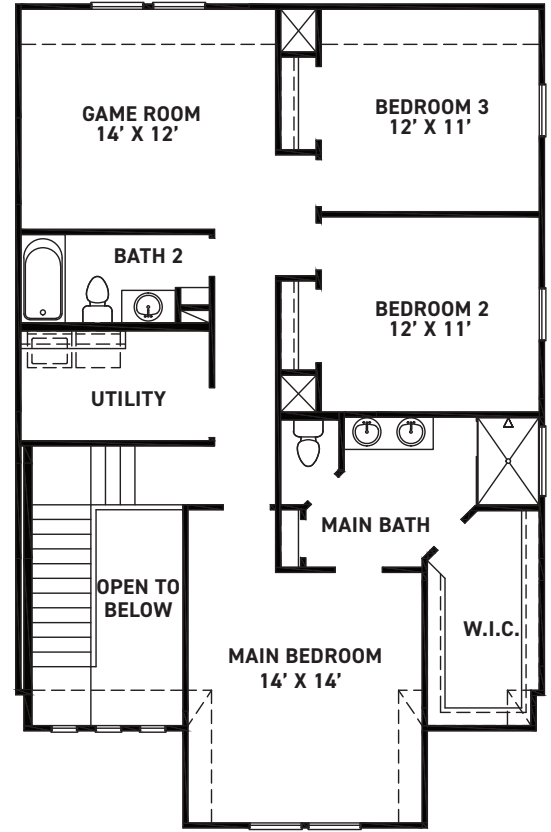
**TUB @ MAIN BATH OPTION**



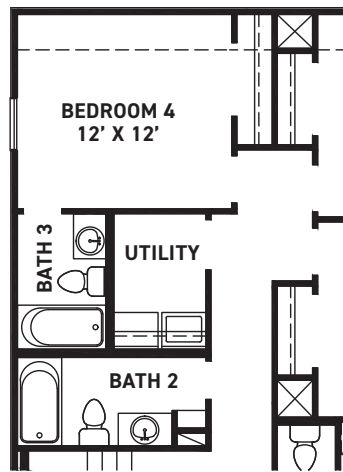
**COVERED PATIO OPTION**

**FEATURES:**

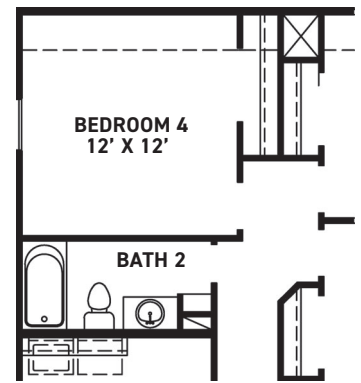
- 2082 SQUARE FT.
- 3 BEDROOM
- 2-1/2 BATHROOM
- 2 CAR GARAGE



**SECOND FLOOR PLAN**



**BEDROOM 4/BATH 3 OPT.**



**BEDROOM 4/BATH 2 OPT.**

REV 12/24 (401F)



These drawings are conceptual only and are for the convenience of reference. They should not be relied upon as representations, express or implied, of the final detail of the residences. The builder expressly reserves the right to make modifications, revisions, and changes it deems desirable in its sole and absolute discretion. Dimensions and square footages are approximate and may vary with actual construction.



[newmarkhomes.com](http://newmarkhomes.com)