



10919 White Mangrove Drive

Cypress, TX 77433 | MLS #9284707
\$1,025,851

Sq Ft	Beds	Baths	Stories	Garage
4,305	5	5.5	2	3

Newmark Homes is selling a new construction MONTEREY plan in Bridgeland. This top-shelf FULL STUCCO, 70' floor plan with BALCONY, offers everything the most discerning home buyers are looking for on a CORNER LOT! It has 5 bedrooms (2 d... [READ MORE »](#)

Plan Your Visit

Bridgeland 70' Model
Versailles Plan
21219 Prince of Orange Ln.
Cypress, TX 77433

MODEL HOME HOURS
Monday to Saturday: 10 a.m. - 6 p.m.
Sunday: 12 p.m. - 6 p.m.

Community Sales Manager
Lance Sonka
(281) 818-2727
lsonka@newmarkhomes.com



ELEVATION 1



ELEVATION 2



ELEVATION 3



ELEVATION 4



ELEVATION 5

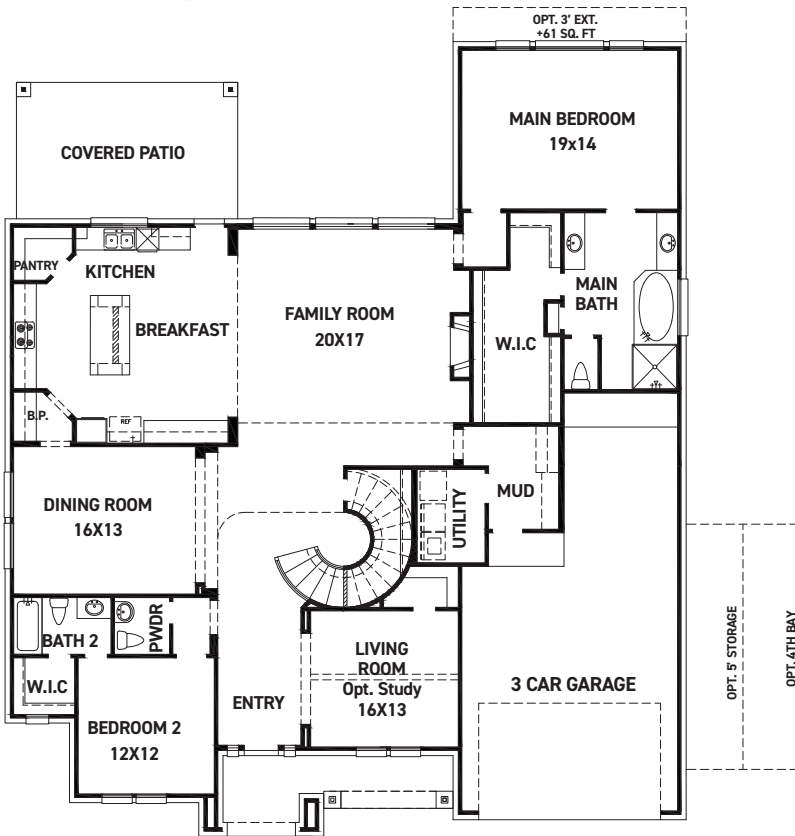
REV 06/24 (7022)



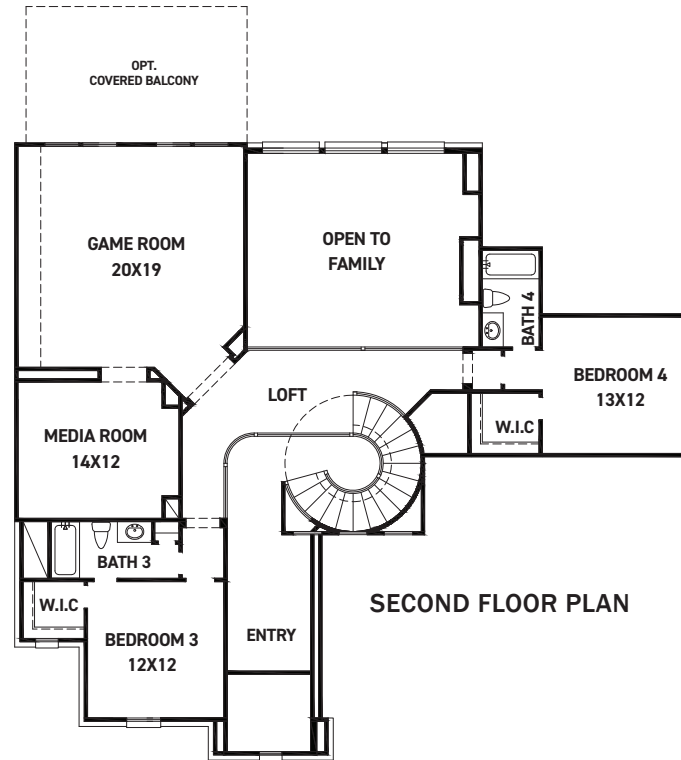
These drawings are conceptual only and are for the convenience of reference. They should not be relied upon as representations, express or implied, of the final detail of the residences. The builder expressly reserves the right to make modifications, revisions, and changes it deems desirable in its sole and absolute discretion. Dimensions and square footages are approximate and may vary with actual construction. Due to design and footage requirements not all options/elevations are available in all locations.



newmarkhomes.com



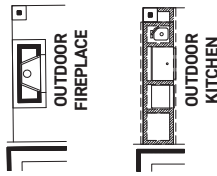
FIRST FLOOR PLAN



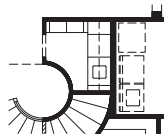
SECOND FLOOR PLAN

FEATURES:

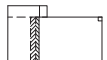
- 4,046 SQUARE FT.
- 4 BEDROOM
- 4 1/2 BATHROOM
- 3 CAR GARAGE



COVERED PATIO OPTIONS



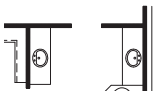
OPT. WINE GROTTO



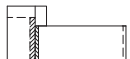
OPT. TABLE LEGS END



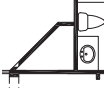
OPT. CORNER FIREPLACE



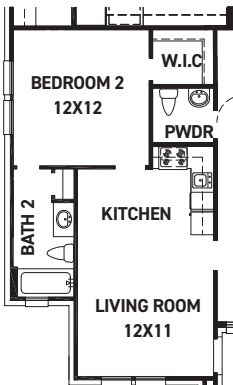
OPT. ENLARGED MAIN SHOWER



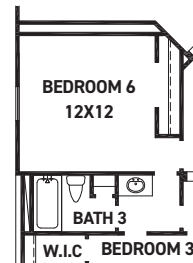
OPT. WATERFALL EDGE END



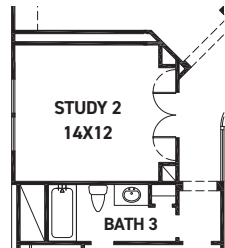
OPT. SECOND FLOOR W/CORNER FIREPLACE



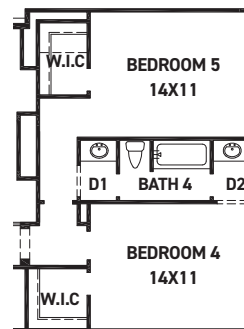
OPT. DUAL HOME



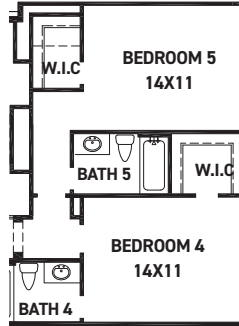
OPT. BEDROOM 6



OPT. STUDY 2



OPT. BEDROOM 5 +268 SQ. FT.



OPT. BEDROOM 5 W/ BATH 5 +268 SQ. FT.

REV 06/24 (70)



These drawings are conceptual only and are for the convenience of reference. They should not be relied upon as representations, express or implied, of the final detail of the residences. The builder expressly reserves the right to make modifications, revisions, and changes it deems desirable in its sole and absolute discretion. Dimensions and square footages are approximate and may vary with actual construction. Due to design and footage requirements not all options/elevations are available in all locations.



newmarkhomes.com