



Lower Interest Rates Available!

Flex Allowance to use YOUR way on select Quick Delivery Homes

Lower Interest Rate Available*



1028 Teakmill Trail

San Marcos, TX 78666

\$468,990

	Beds	Baths	Stories	Garage
1,926	3	2	1	2

This charming one-story Lucerne floor plan is ready to welcome you home, with a **20k flex cash allowance plus up to an additional \$7,500 in closing cost contributions available with our preferred lender.**

Featuring 3 bedrooms, 2 baths, a... [READ MORE](#)



Plan Your Visit

La Cima 50' Model
Umbria Plan
209 Missouri Primrose Lane
San Marcos, TX 78666

MODEL HOME HOURS
Monday to Saturday: 10 a.m. - 6 p.m.
Sunday: 12 p.m. - 6 p.m.

Community Sales Manager
Thomas Serhus
(713) 302-3050
tserhus@newmarkhomes.com



ELEVATION 1



ELEVATION 2



ELEVATION 3



ELEVATION 4



ELEVATION 5

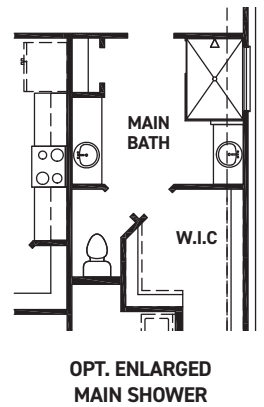
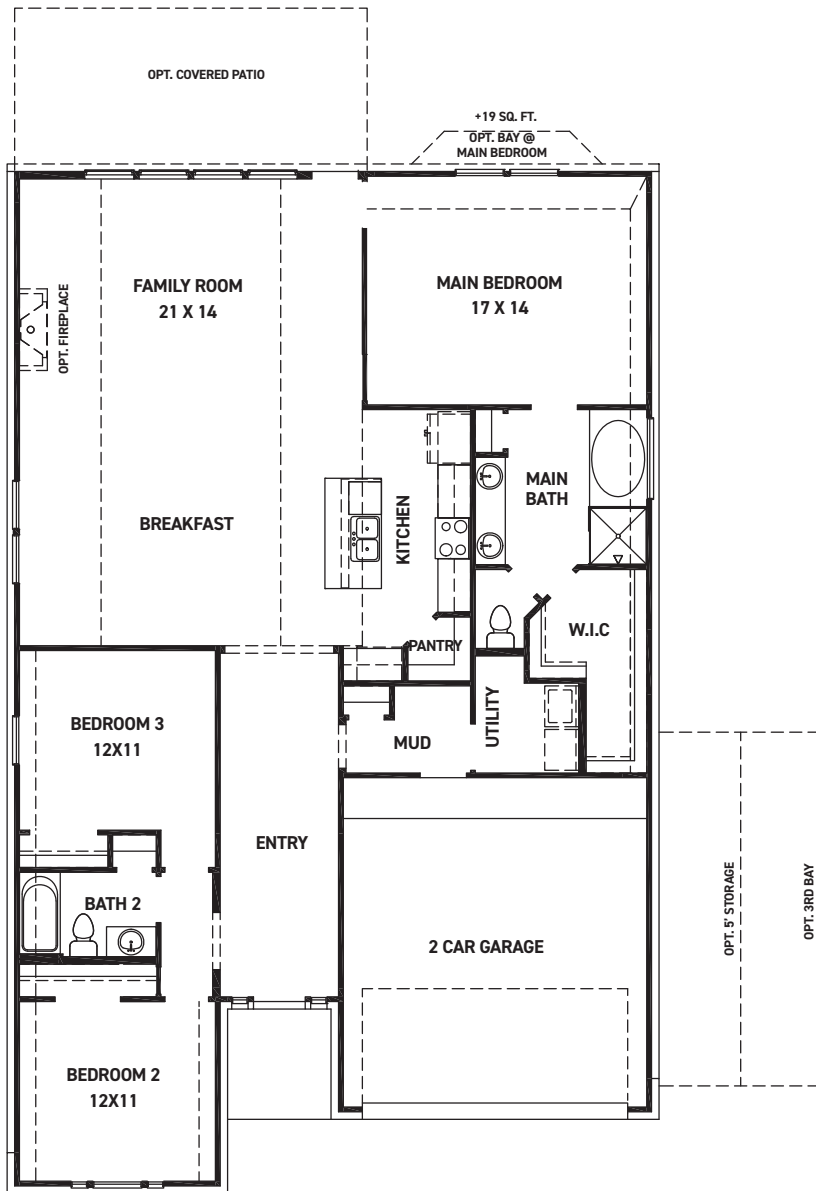
REV 08/23 (5040)



These drawings are conceptual only and are for the convenience of reference. They should not be relied upon as representations, express or implied, of the final detail of the residences. The builder expressly reserves the right to make modifications, revisions, and changes it deems desirable in its sole and absolute discretion. Dimensions and square footages are approximate and may vary with actual construction. Due to design and footage requirements not all options/elevations are available in all locations.



newmarkhomes.com



FIRST FLOOR PLAN

FEATURES:

- 1926 SQUARE FT.
- 3 BEDROOM
- 2 BATHROOM
- 2 CAR GARAGE

REV 08/23 (504)



These drawings are conceptual only and are for the convenience of reference. They should not be relied upon as representations, express or implied, of the final detail of the residences. The builder expressly reserves the right to make modifications, revisions, and changes it deems desirable in its sole and absolute discretion. Dimensions and square footages are approximate and may vary with actual construction. Due to design and footage requirements not all options/elevations are available in all locations.



newmarkhomes.com