



# 29726 Loblolly View Lane

Fulshear, TX 77441 | MLS #2032188  
\$939,131

Sq Ft	Beds	Baths	Stories	Garage
<b>4,318</b>	<b>5</b>	<b>5.5</b>	<b>2</b>	<b>3</b>

THE VENETIAN BY NEWMARK HOMES: This POPULAR 2 story home has it all. Welcome Home to this elegant courtyard home, with the stone - stucco and brick elevation in modern light colors. Study and Formal Dining Room with views of the courty... [READ MORE »](#)

## Plan Your Visit

Cross Creek Ranch 70' Model  
Amalfi Plan  
Model Now Open  
29818 Aaron River Trail  
Fulshear, TX 77441

---

MODEL HOME HOURS  
Monday to Saturday: 10 a.m. - 6 p.m.  
Sunday: 12 p.m. - 6 p.m.

---

Community Sales Manager  
Merri Turco  
[\(281\) 413-0216](tel:(281)413-0216)  
[mturco@newmarkhomes.com](mailto:mturco@newmarkhomes.com)

---



**ELEVATION 1**



**ELEVATION 2**



**ELEVATION 3**



**ELEVATION 4**



**ELEVATION 5**



**ELEVATION 6**

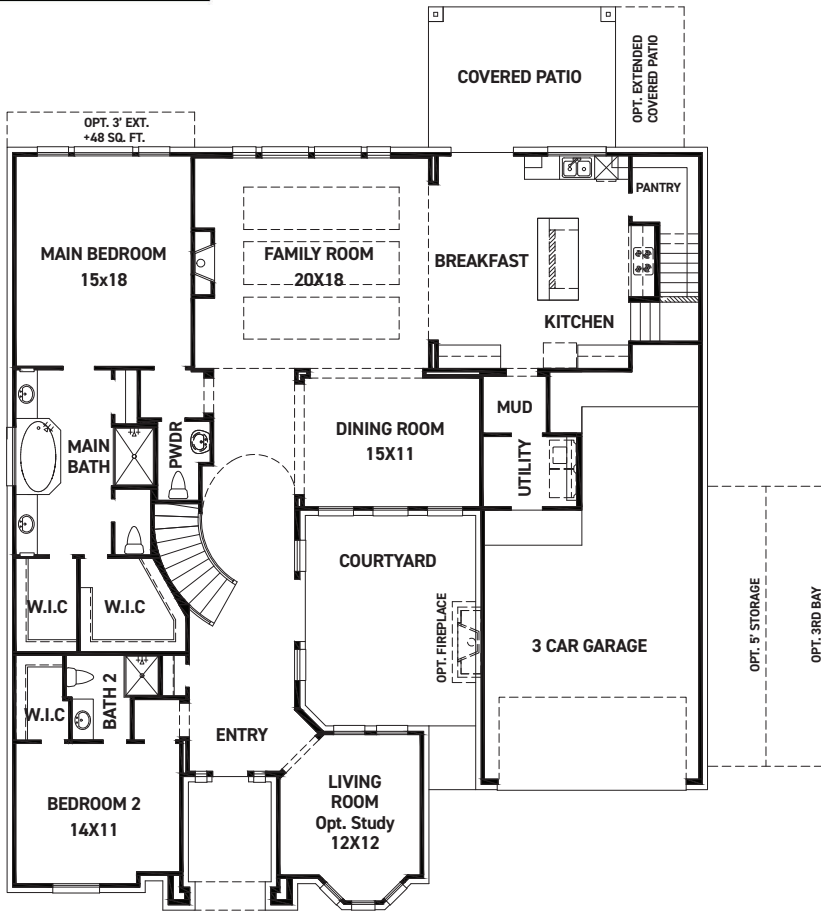
REV 06/24 (7)



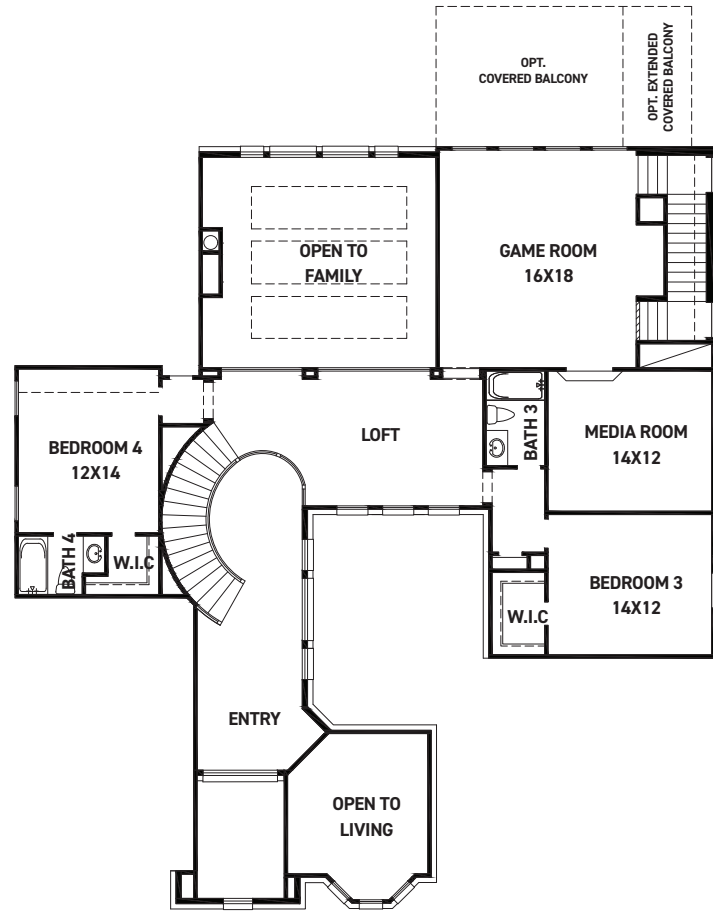
These drawings are conceptual only and are for the convenience of reference. They should not be relied upon as representations, express or implied, of the final detail of the residences. The builder expressly reserves the right to make modifications, revisions, and changes it deems desirable in its sole and absolute discretion. Dimensions and square footages are approximate and may vary with actual construction. Due to design and footage requirements not all options/elevations are available in all locations.



[newmarkhomes.com](http://newmarkhomes.com)



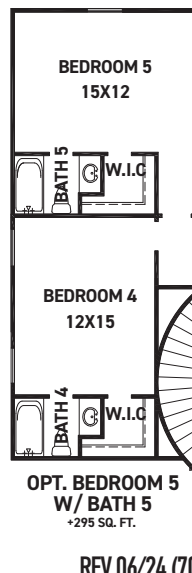
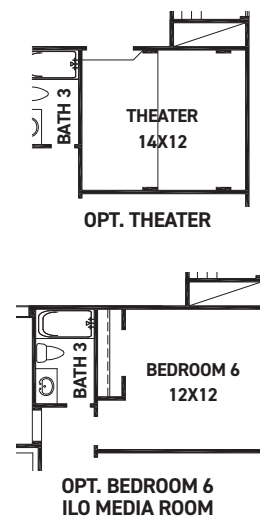
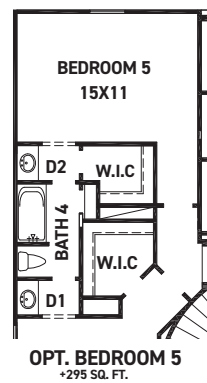
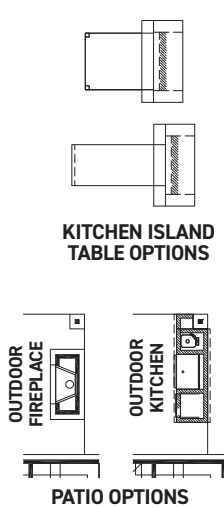
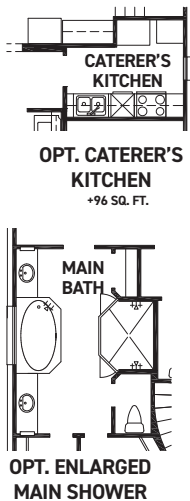
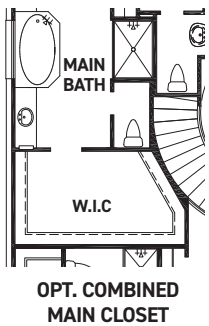
FIRST FLOOR PLAN



SECOND FLOOR PLAN

**FEATURES:**

- 4,010 SQUARE FT.
- 4 BEDROOM
- 4 1/2 BATHROOM
- 3 CAR GARAGE



REV 06/24 (7)



These drawings are conceptual only and are for the convenience of reference. They should not be relied upon as representations, express or implied, of the final detail of the residences. The builder expressly reserves the right to make modifications, revisions, and changes it deems desirable in its sole and absolute discretion. Dimensions and square footages are approximate and may vary with actual construction. Due to design and footage requirements not all options/elevations are available in all locations.



[newmarkhomes.com](http://newmarkhomes.com)