



4502 Starling Haven Lane

Fulshear, TX 77441 | MLS #13226408
\$533,846

Sq Ft	Beds	Baths	Stories	Garage
3,156	4	3.5	2	2

Brand new NEWMARK HOME in the popular CROSS CREEK WEST community. The 50' STRASBURG offers 4 bedrooms w/ 3.5 baths. If you are looking to enjoy short drive times estimated to under 7 minutes to 1093 & I-10 then this is home for you! En... [READ MORE »](#)

Plan Your Visit

Cross Creek West 50' Model
Linz Plan
New Section NOW OPEN!
31518 Bramble Hollow Court
Fulshear, TX 77441

MODEL HOME HOURS
Monday to Saturday: 10 a.m. - 6 p.m.
Sunday: 12 p.m. - 6 p.m.

Community Sales Manager
Andrew Turco
[\(713\) 825-4914](tel:(713)825-4914)
aturco@newmarkhomes.com



ELEVATION 1



ELEVATION 2



ELEVATION 3



ELEVATION 4



ELEVATION 5

REV 06/24(5011)



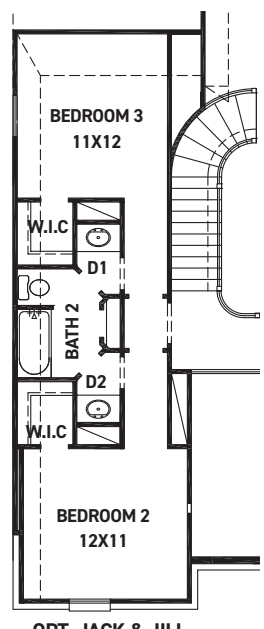
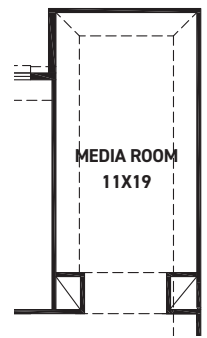
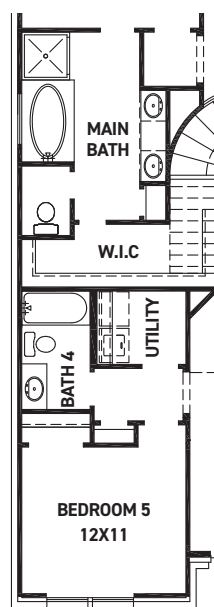
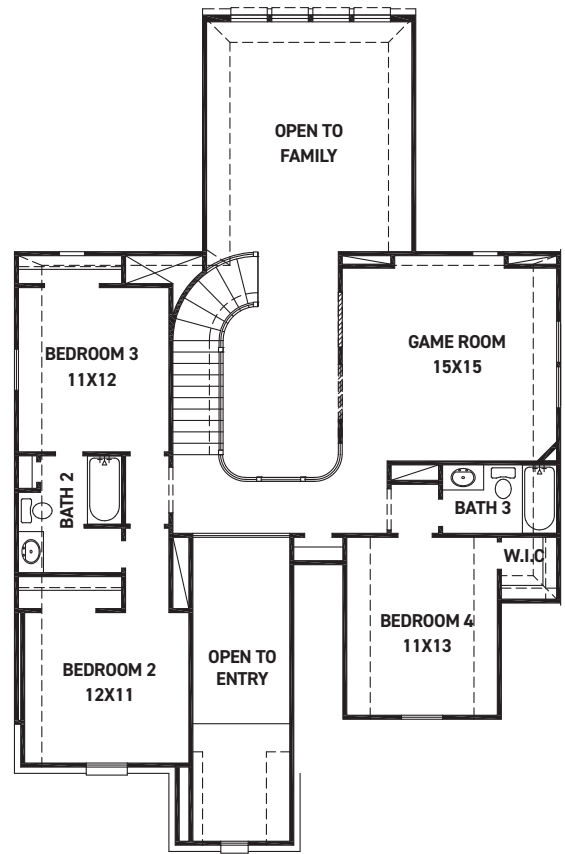
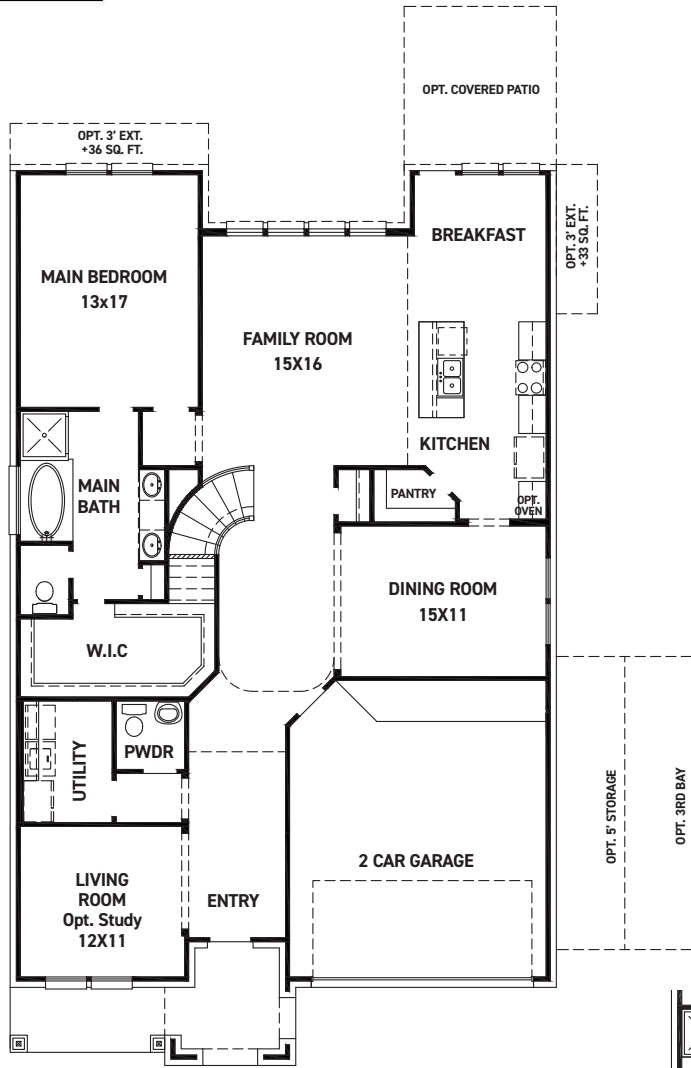
These drawings are conceptual only and are for the convenience of reference. They should not be relied upon as representations, express or implied, of the final detail of the residences. The builder expressly reserves the right to make modifications, revisions, and changes it deems desirable in its sole and absolute discretion. Dimensions and square footages are approximate and may vary with actual construction. Due to design and footage requirements not all options/elevations are available in all locations.



newmarkhomes.com

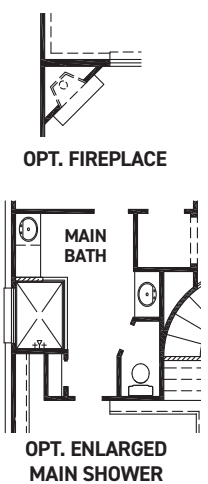


Strasburg



FEATURES:

- 2,899 SQUARE FT.
- 4 BEDROOM
- 3 1/2 BATHROOM
- 2 CAR GARAGE



These drawings are conceptual only and are for the convenience of reference. They should not be relied upon as representations, express or implied, of the final detail of the residences. The builder expressly reserves the right to make modifications, revisions, and changes it deems desirable in its sole and absolute discretion. Dimensions and square footages are approximate and may vary with actual construction. Due to design and footage requirements not all options/elevations are available in all locations.



newmarkhomes.com

REV 06/24 (501)