



# 30319 Crossfield Court

Fulshear, TX 77441 | MLS #61585417  
\$807,900

Sq Ft	Beds	Baths	Stories	Garage
<b>3,470</b>	<b>4</b>	<b>4.5</b>	<b>2</b>	<b>3</b>

Welcome to a new and exciting two story plan by Newmark Homes called the Siena. This home features 4 bedrooms whereby 2 are on the first level, 4.5 baths and 3 car split garage. Game room included on second level with media on the first... [READ MORE »](#)

## Plan Your Visit

Fulbrook on Fulshear Creek 60' Model  
Vicenza Plan  
Ask Us About Our Up To 25k Flex Allowance!

5310 Lakeview Bend  
Fulshear, TX 77441

---

MODEL HOME HOURS  
Monday to Saturday: 10 a.m. - 6 p.m.  
Sunday: 12 p.m. - 6 p.m.

---

Community Sales Manager  
Rhonda Bastine  
[\(713\) 582-0049](tel:(713)582-0049)  
[rbastine@newmarkhomes.com](mailto:rbastine@newmarkhomes.com)  
Ed Vallejo  
[\(713\) 898-6108](tel:(713)898-6108)  
[evallejo@newmarkhomes.com](mailto:evallejo@newmarkhomes.com)

---



**ELEVATION 1**



**ELEVATION 2**



**ELEVATION 3**



**ELEVATION 4**



**ELEVATION 5**



**ELEVATION 6**

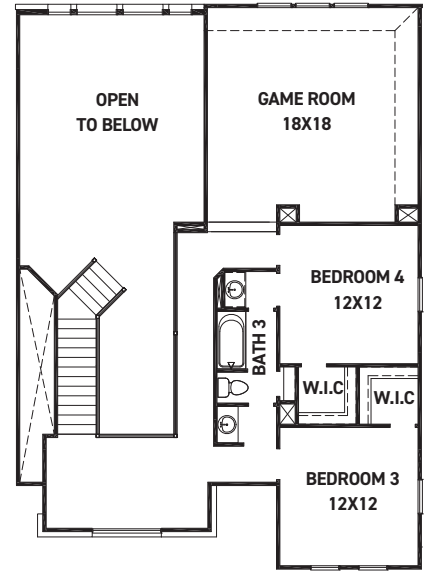
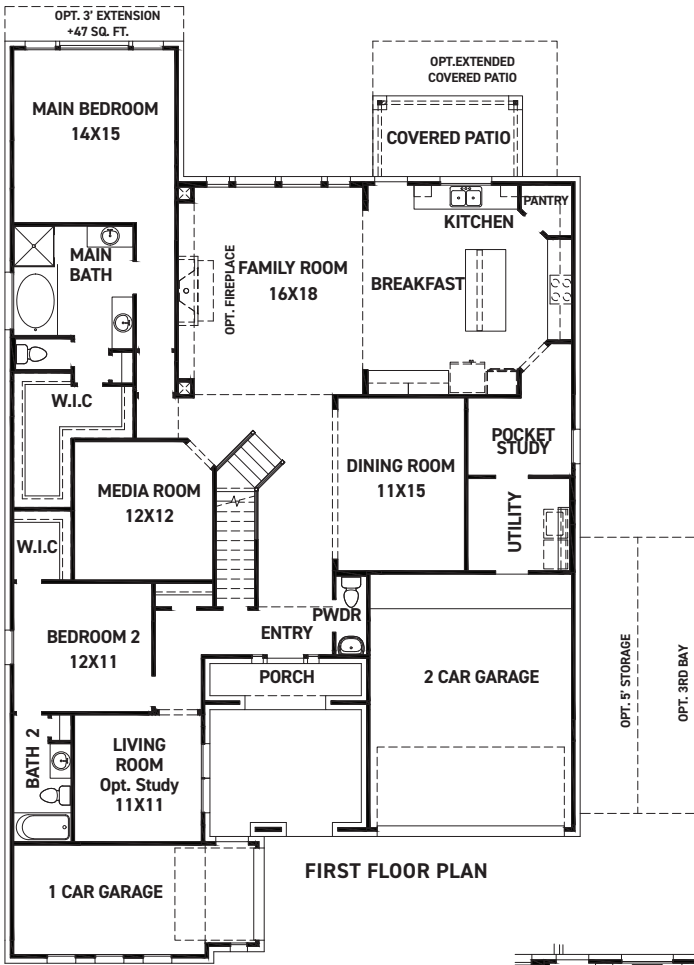
REV 04/24 (6



These drawings are conceptual only and are for the convenience of reference. They should not be relied upon as representations, express or implied, of the final detail of the residences. The builder expressly reserves the right to make modifications, revisions, and changes it deems desirable in its sole and absolute discretion. Dimensions and square footages are approximate and may vary with actual construction. Due to design and footage requirements not all options/elevations are available in all locations.

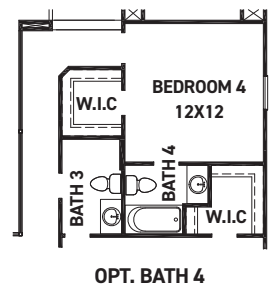
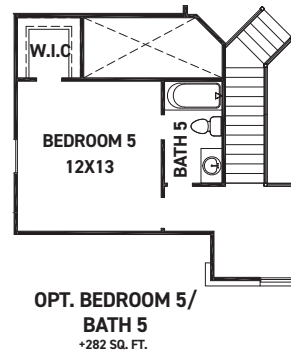
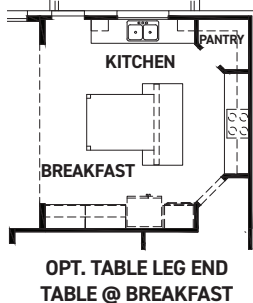
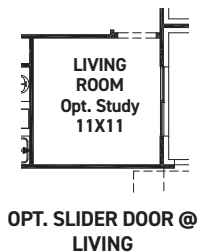
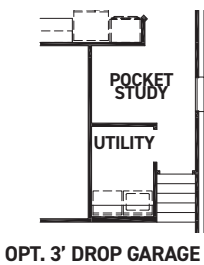
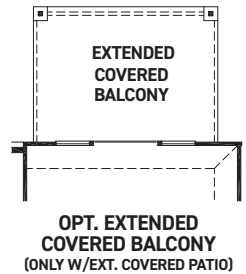
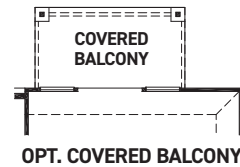
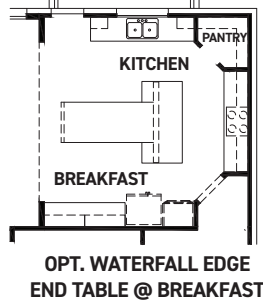
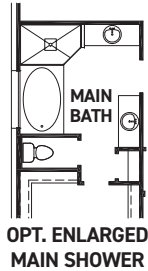


[newmarkhomes.com](http://newmarkhomes.com)



### FEATURES:

- 3,423 SQUARE FT.
- 4 BEDROOM
- 3 1/2 BATHROOMS
- 3 CAR SPLIT GARAGE



REV 04/24 (60



These drawings are conceptual only and are for the convenience of reference. They should not be relied upon as representations, express or implied, of the final detail of the residences. The builder expressly reserves the right to make modifications, revisions, and changes it deems desirable in its sole and absolute discretion. Dimensions and square footages are approximate and may vary with actual construction. Due to design and footage requirements not all options/elevations are available in all locations.



[newmarkhomes.com](http://newmarkhomes.com)