



8274 Boundary Waters Dr

Porter, TX 77365 | MLS #3036662
\$569,605

Sq Ft	Beds	Baths	Stories	Garage
2,900	5	4	2	2

NEWMARK HOMES NEW CONSTRUCTION -End of Feb-March Completion. Strasburg - Welcome home to 8274 Boundary Waters Dr. located in the master planned golf course community of The Highlands. New construction by the CUTTING EDGE builder NEWMAR... [READ MORE »](#)

Plan Your Visit

The Highlands 50' Model
Roosevelt Plan
MODEL NOW OPEN

21718 Grayson Highlands Way
Porter, Texas 77365

MODEL HOME HOURS
Monday to Saturday: 10 a.m. - 6 p.m.
Sunday: 12 p.m. - 6 p.m.

Community Sales Manager
Rick Cole
[713-598-1000](tel:713-598-1000)
rcole@newmarkhomes.com



ELEVATION 1



ELEVATION 2



ELEVATION 3



ELEVATION 4



ELEVATION 5

REV 06/24(5011)



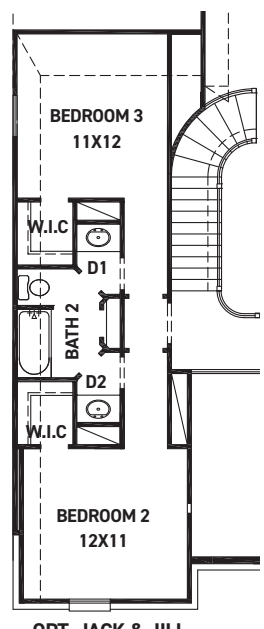
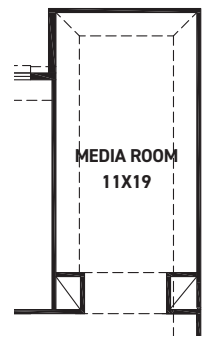
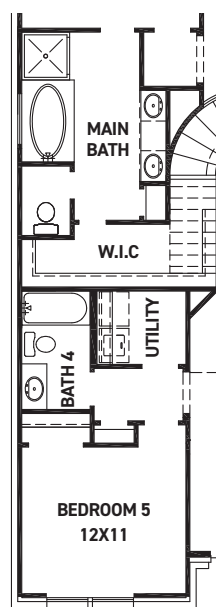
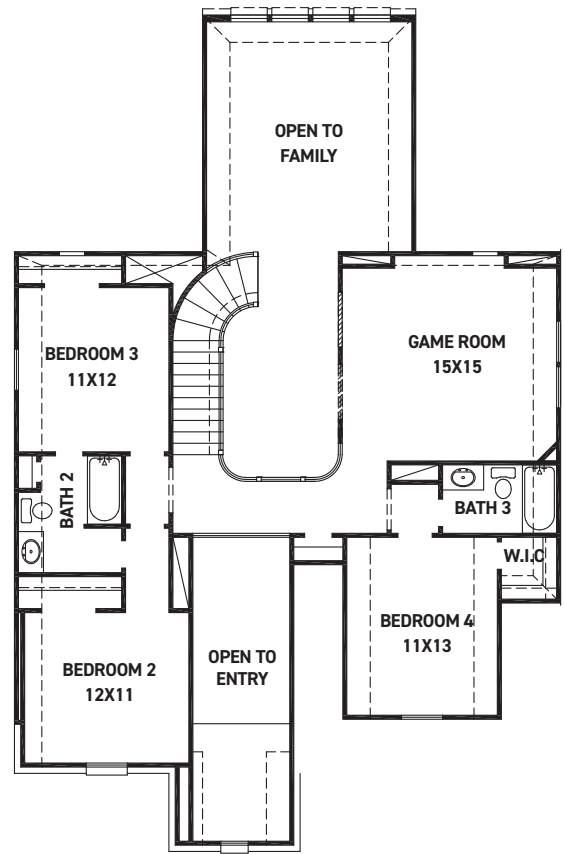
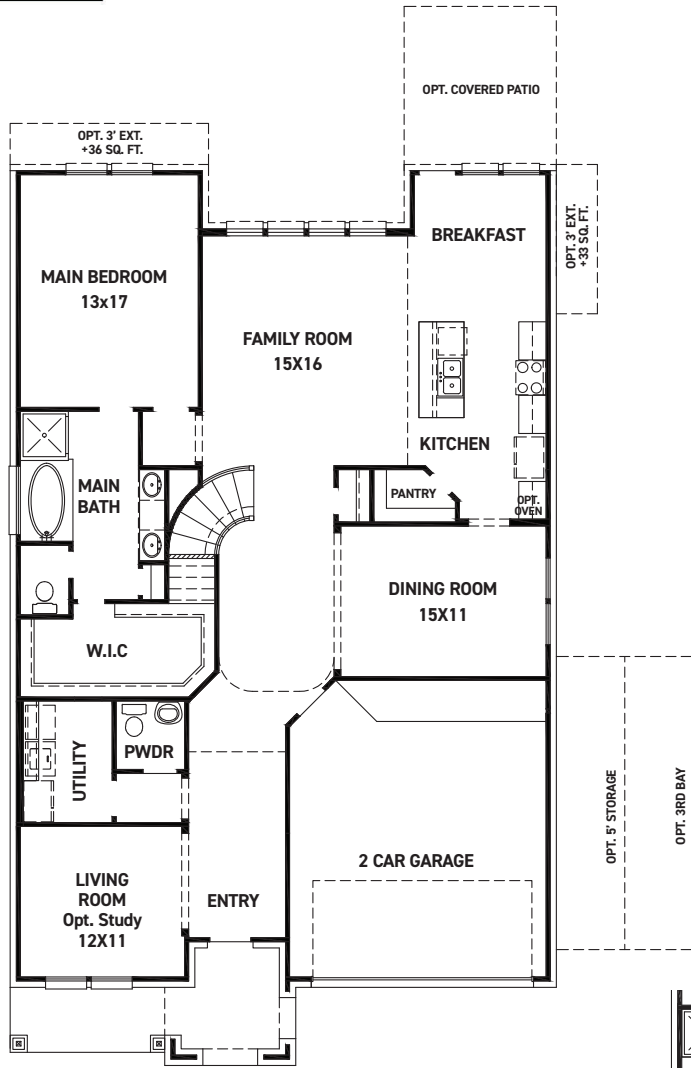
These drawings are conceptual only and are for the convenience of reference. They should not be relied upon as representations, express or implied, of the final detail of the residences. The builder expressly reserves the right to make modifications, revisions, and changes it deems desirable in its sole and absolute discretion. Dimensions and square footages are approximate and may vary with actual construction. Due to design and footage requirements not all options/elevations are available in all locations.



newmarkhomes.com

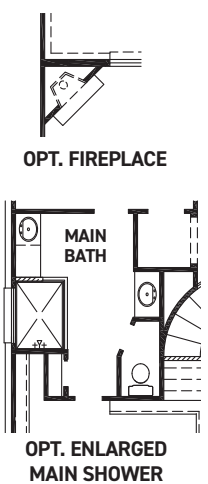


Strasburg



FEATURES:

- 2,899 SQUARE FT.
- 4 BEDROOM
- 3 1/2 BATHROOM
- 2 CAR GARAGE



These drawings are conceptual only and are for the convenience of reference. They should not be relied upon as representations, express or implied, of the final detail of the residences. The builder expressly reserves the right to make modifications, revisions, and changes it deems desirable in its sole and absolute discretion. Dimensions and square footages are approximate and may vary with actual construction. Due to design and footage requirements not all options/elevations are available in all locations.



newmarkhomes.com

REV 06/24 (501)