



603 Gunison Drive

Lakeway, TX 78738 | MLS #7036721
\$939,990

Sq Ft	Beds	Baths	Stories	Garage
3,648	5	5.5	2	4

Newmark Homes stunning 2-story Lady Bird Plan, in Rough Hollow's newest section, Santa Luz, is a 5 bed/ 5.5 bath/ 4 car garage home. It includes many high end finishes such as: an extended rear covered patio, game room, media room, dining room, bay windows in the main bedroom, butler's pantry, 2-story ceiling in the family room, stainless steel appliances, open concept and tankless water heater.

Plan Your Visit

Rough Hollow Model Home
Lady Bird Plan
Lakeway, TX 78738

MODEL HOME HOURS
By Appointment Only
Monday to Saturday: 10 a.m. - 6 p.m.
Sunday: 12 p.m. - 6 p.m.

Community Sales Manager
Dori Conway
(612) 720-1090
dconway@newmarkhomes.com

N

HIGHLAND TERRACE at Rough Hollow

Lady Bird



ELEVATION 5



ELEVATION 9



ELEVATION 10

REV 7/20 (60



These drawings are conceptual only and are for the convenience of reference. They should not be relied upon as representations, express or implied, of the final detail of the residences. The builder expressly reserves the right to make modifications, revisions, and changes it deems desirable in its sole and absolute discretion. Dimensions and square footages are approximate and may vary with actual construction.

NEW MARK
H O M E S

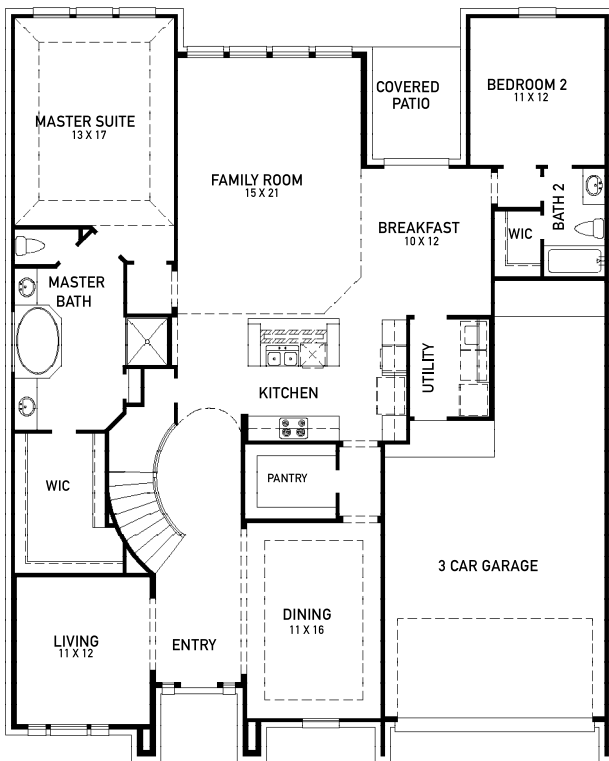
newmarkhomes.com

March 29, 2024

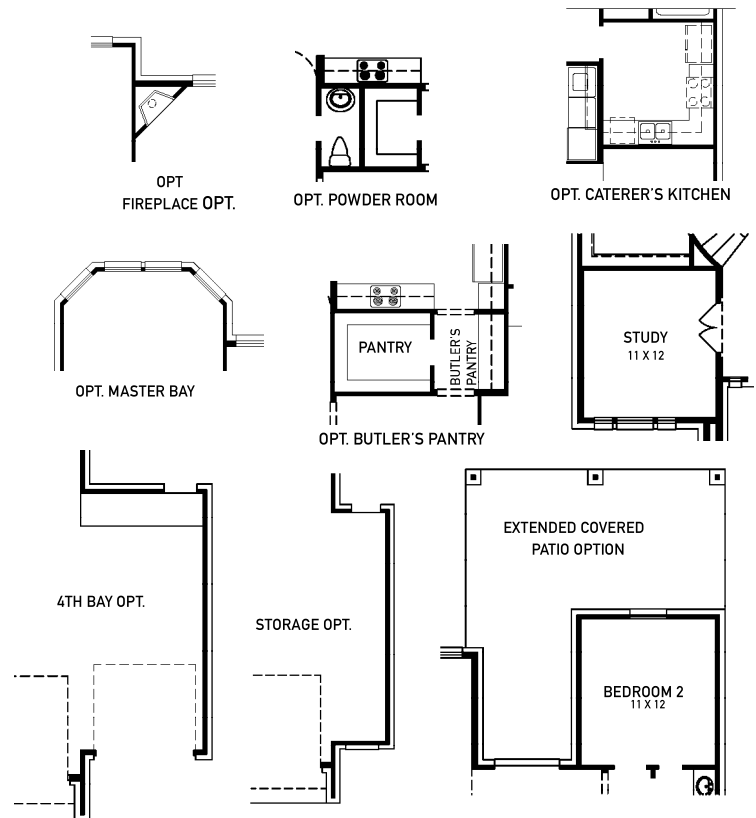
N

HIGHLAND TERRACE at Rough Hollow

Lady Bird

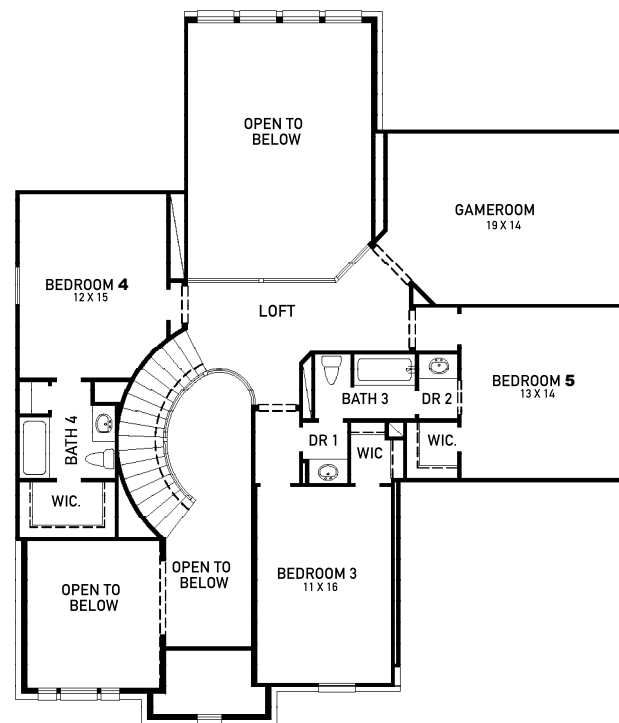
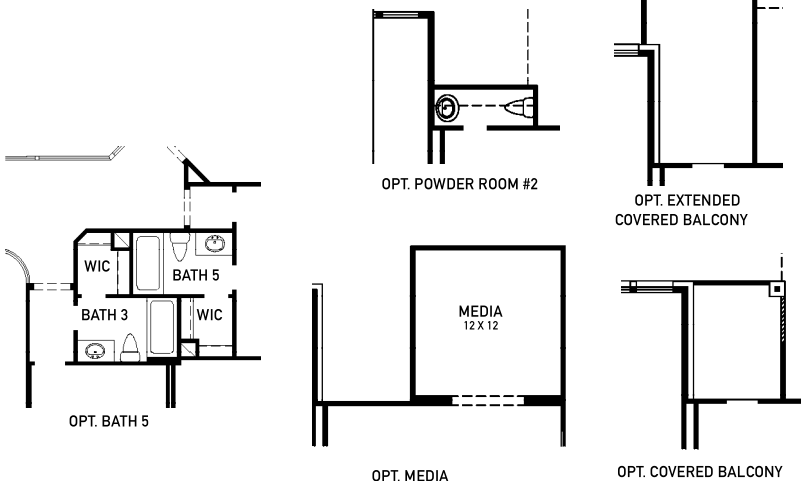


FIRST FLOOR



FEATURES:

- 3,569 SQUARE FT.
- 5 BEDROOM
- 4 BATHROOM
- 3 CAR GARAGE



SECOND FLOOR

REV 7/20 (60



These drawings are conceptual only and are for the convenience of reference. They should not be relied upon as representations, express or implied, of the final detail of the residences. The builder expressly reserves the right to make modifications, revisions, and changes it deems desirable in its sole and absolute discretion. Dimensions and square footages are approximate and may vary with actual construction.

NEW MARK
HOMES

newmarkhomes.com

March 29, 2024