



7704 Ella Lee Lane

Austin, TX 78744 | MLS #9377540
\$684,990

Sq Ft	Beds	Baths	Stories	Garage
2,907	4	3.5	2	2

Located in Easton Park's newest section- Discovery Park, Newmark Homes Eloquent Plan is filled with high end features and is conveniently located across the street from Easton Park's largest attraction, Skyline Park! This 4 bed/ 3.5 bath/ 2 car extended garage home includes: a study, gamer... [READ MORE](#) »oom, glass sliders that lead out to a covered side patio, front porch, mud room with valet, pantry, stainless steel appliances, tankless water heater and car charge pre-wire.

Plan Your Visit

Easton Park Charm Plan
Charm Plan
7804 Skytree Drive
Austin, TX 78744

MODEL HOME HOURS

Monday to Saturday: 10 a.m. - 6 p.m.
Sunday: 12 p.m. - 6 p.m.

Community Sales Manager

Carlos Fermin

(281) 428-6713

cfermin@newmarkhomes.com



ELEVATION 1



ELEVATION 2



ELEVATION 3

REV 07/23 (Q)

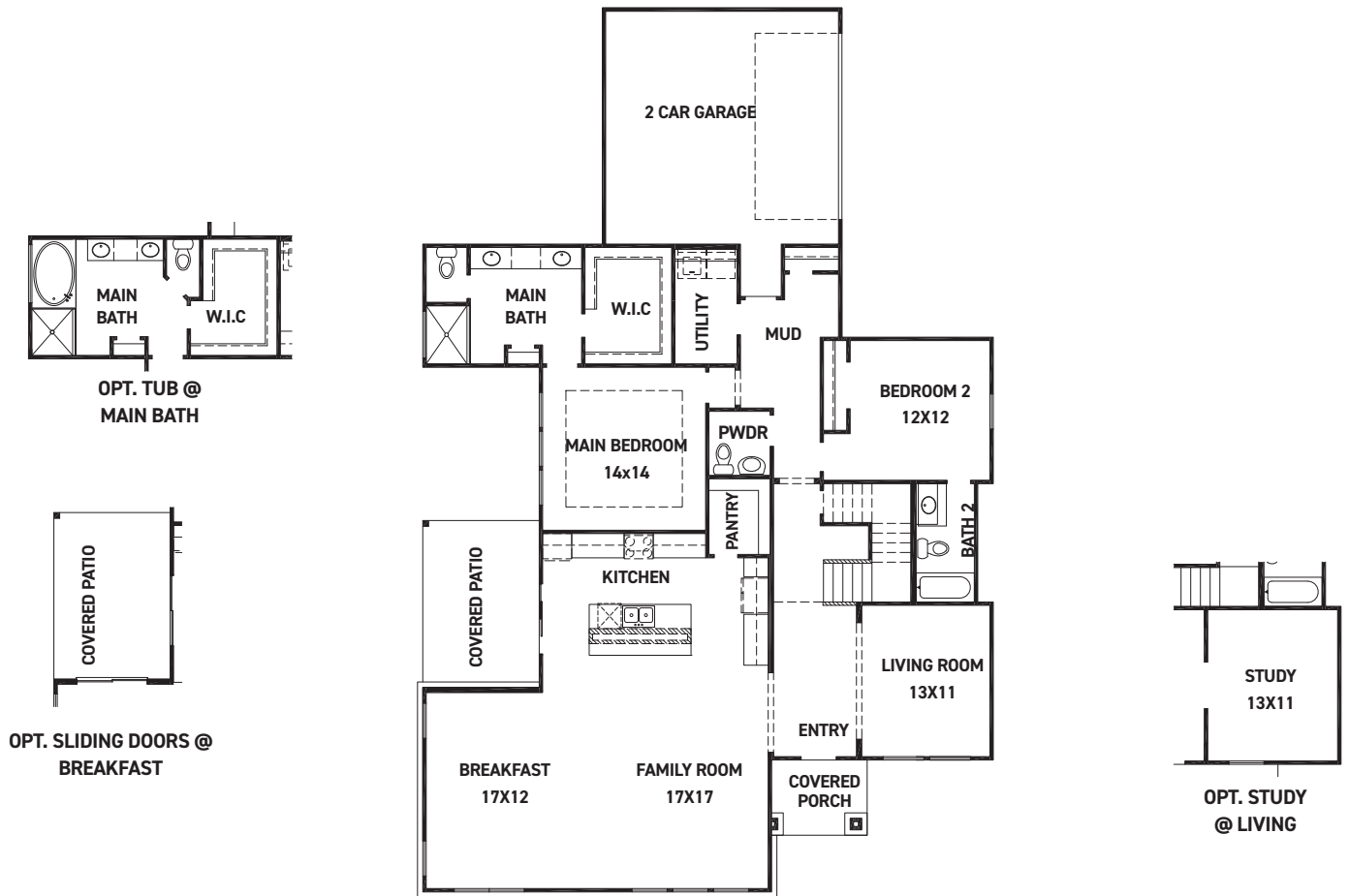


These drawings are conceptual only and are for the convenience of reference. They should not be relied upon as representations, express or implied, of the final detail of the residences. The builder expressly reserves the right to make modifications, revisions, and changes it deems desirable in its sole and absolute discretion. Dimensions and square footages are approximate and may vary with actual construction.

N **NEWMARK**
HOMES

newmarkhomes.com

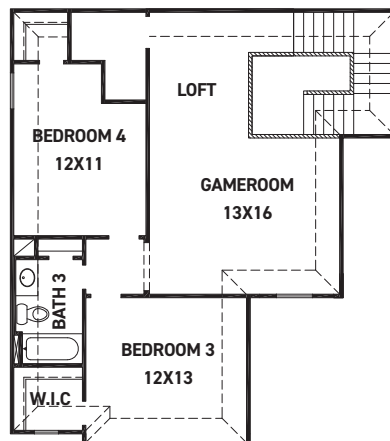
April 19, 2024



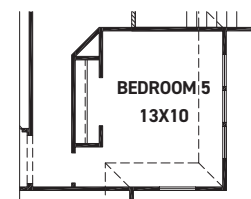
FIRST FLOOR PLAN

FEATURES:

- 2,897 SQUARE FT.
- 4 BEDROOM
- 3 1/2 BATHROOM
- 2 CAR GARAGE



SECOND FLOOR PLAN



OPT. BEDROOM 5 @ GAME ROOM

REV 07/23 (Q)

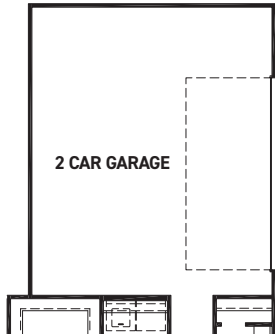


These drawings are conceptual only and are for the convenience of reference. They should not be relied upon as representations, express or implied, of the final detail of the residences. The builder expressly reserves the right to make modifications, revisions, and changes it deems desirable in its sole and absolute discretion. Dimensions and square footages are approximate and may vary with actual construction.

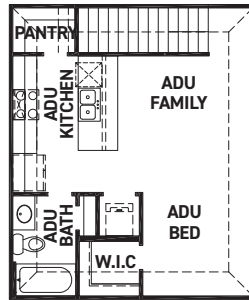
NEW MARK
HOMES

newmarkhomes.com

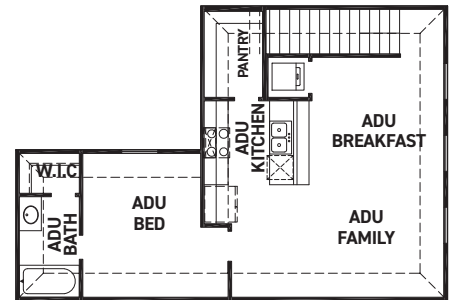
April 19, 2024



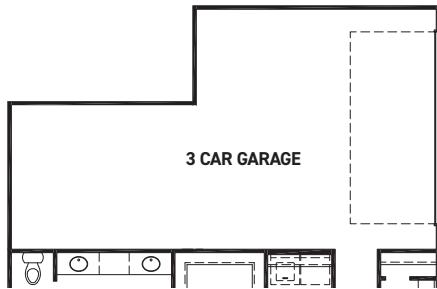
OPT. STORAGE



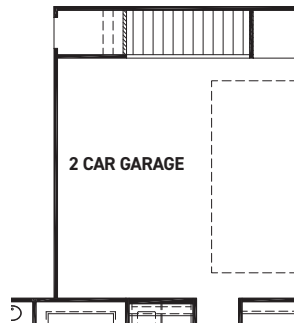
OPT. A.D.U.
+508 SQ. FT.



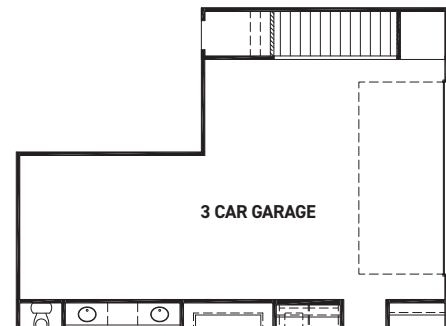
OPT. A.D.U W/ BEDROOM
+700 SQ. FT.



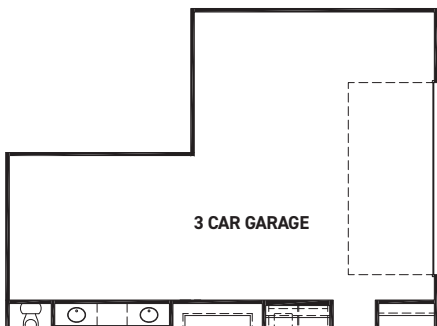
OPT. 3RD BAY



OPT. FIRST FLOOR W/ A.D.U



OPT. FIRST FLOOR W/
A.D.U & 3RD BAY



OPT. 3RD BAY & STORAGE

REV 07/23 (Q)



These drawings are conceptual only and are for the convenience of reference. They should not be relied upon as representations, express or implied, of the final detail of the residences. The builder expressly reserves the right to make modifications, revisions, and changes it deems desirable in its sole and absolute discretion. Dimensions and square footages are approximate and may vary with actual construction.



newmarkhomes.com

April 19, 2024



REV 07/23 (Q



These drawings are conceptual only and are for the convenience of reference. They should not be relied upon as representations, express or implied, of the final detail of the residences. The builder expressly reserves the right to make modifications, revisions, and changes it deems desirable in its sole and absolute discretion. Dimensions and square footages are approximate and may vary with actual construction.

newmarkhomes.com

April 19, 2024