



# 7558 Angels Landing Lane

Porter, TX 77365 | MLS #56196428  
\$539,000

Sq Ft	Beds	Baths	Stories	Garage
2,989	4	3.5	2	2

NEWMARK HOMES NEW CONSTRUCTION -  
VERONA - Welcome home to 7558 Angels  
Landing located in the master planned  
community of The Highlands and zoned to New  
Caney ISD. This gorgeous home will feature 4  
bedrooms, 3.5 full baths and an attached 2 car  
garage. You don't want to miss all this gorgeo...  
READ MORE »us home will have to offer!  
Schedule your showing today!

## Plan Your Visit

The Highlands 50' Model  
Roosevelt Plan  
**MODEL NOW OPEN**

21718 Grayson Highlands Way  
Porter, Texas 77365

---

### MODEL HOME HOURS

Monday to Saturday: 10 a.m. - 6 p.m.  
Sunday: 12 p.m. - 6 p.m.

---

Community Sales Manager

Ryan Fry

(713) 854-1955

[rfry@newmarkhomes.com](mailto:rfry@newmarkhomes.com)

Celeste Valdez

832-646-2527

[cvaldez@newmarkhomes.com](mailto:cvaldez@newmarkhomes.com)

---



**ELEVATION 1**



**ELEVATION 2**



**ELEVATION 4**



**ELEVATION 5**

REV 07/23 (5)

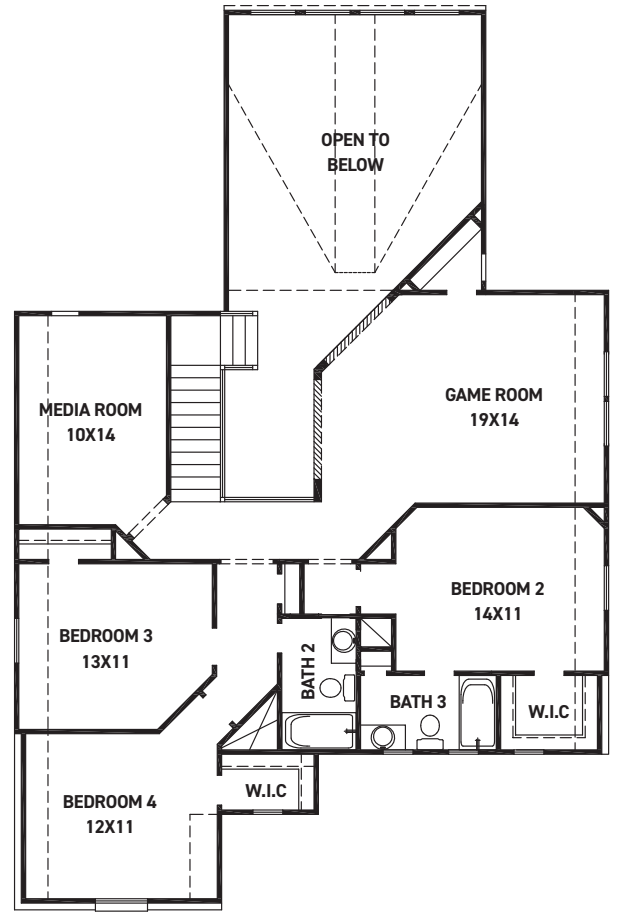
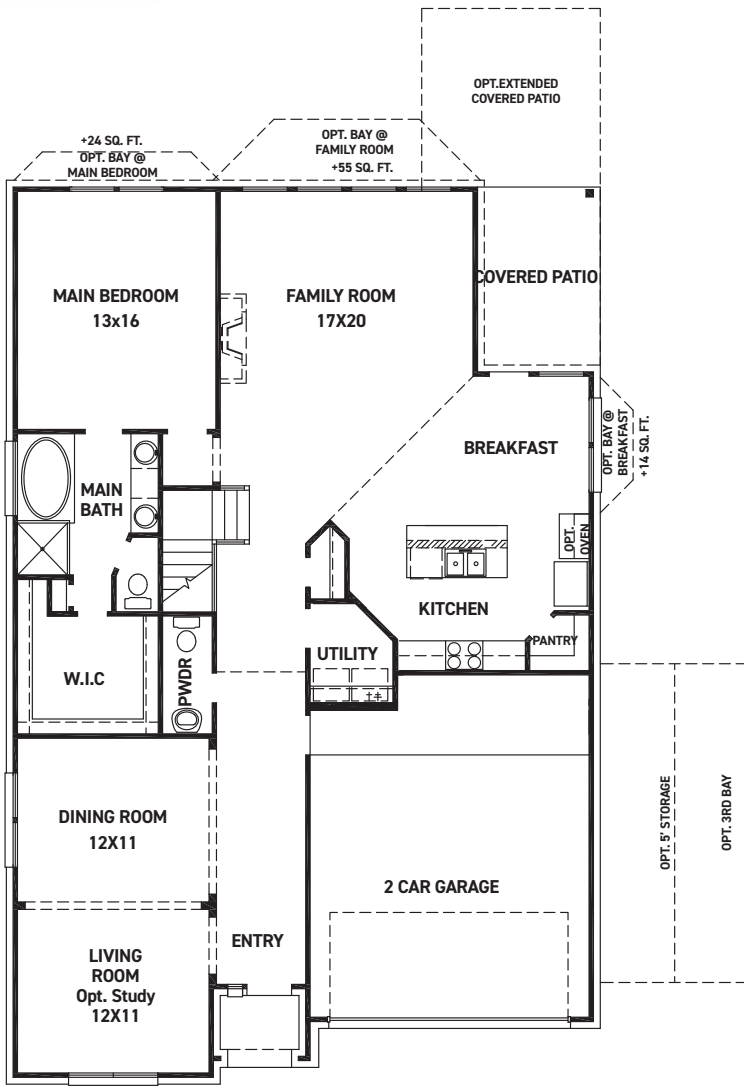


These drawings are conceptual only and are for the convenience of reference. They should not be relied upon as representations, express or implied, of the final detail of the residences. The builder expressly reserves the right to make modifications, revisions, and changes it deems desirable in its sole and absolute discretion. Dimensions and square footages are approximate and may vary with actual construction. Due to design and footage requirements not all options/elevations are available in all locations.



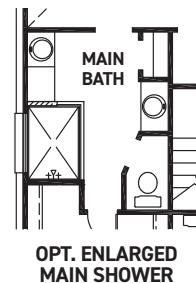
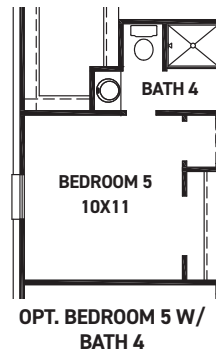
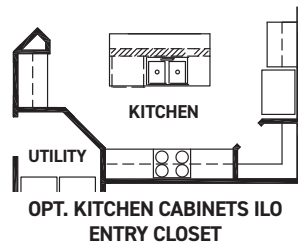
[newmarkhomes.com](http://newmarkhomes.com)

March 28, 2024



## FEATURES:

- 2,989 SQUARE FT.
- 4 BEDROOM
- 3 1/2 BATHROOM
- 2 CAR GARAGE



REV 07/23(50



These drawings are conceptual only and are for the convenience of reference. They should not be relied upon as representations, express or implied, of the final detail of the residences. The builder expressly reserves the right to make modifications, revisions, and changes it deems desirable in its sole and absolute discretion. Dimensions and square footages are approximate and may vary with actual construction. Due to design and footage requirements not all options/elevations are available in all locations.



[newmarkhomes.com](http://newmarkhomes.com)

March 28, 2024