



Lower Interest Rates Available!

Flex Allowance to use YOUR way on select Quick Delivery Homes

Lower Interest Rate Available*



324 Puppy Dog Pass

San Marcos, TX 78666 | MLS #1912488

\$549,990

	Beds	Baths	Stories	Garage
2,809	4	3	2	3

Don't let this opportunity slip away! With up to \$25,000 available in flex cash allowance, plus up to an additional \$11,000 in closing cost contributions with our preferred lender, now is the perfect time to make this beautiful home in... [READ MORE »](#)

Plan Your Visit

La Cima 50' Model
Umbria Plan
209 Missouri Primrose Lane
San Marcos, TX 78666

MODEL HOME HOURS
Monday to Saturday: 10 a.m. - 6 p.m.
Sunday: 12 p.m. - 6 p.m.

Community Sales Manager
Thomas Serhus
(713) 302-3050
tserhus@newmarkhomes.com



ELEVATION 1



ELEVATION 2



ELEVATION 3 (ANTHEM USE 9)



ELEVATION 4



ELEVATION 5

REV 07/23 (5016)A

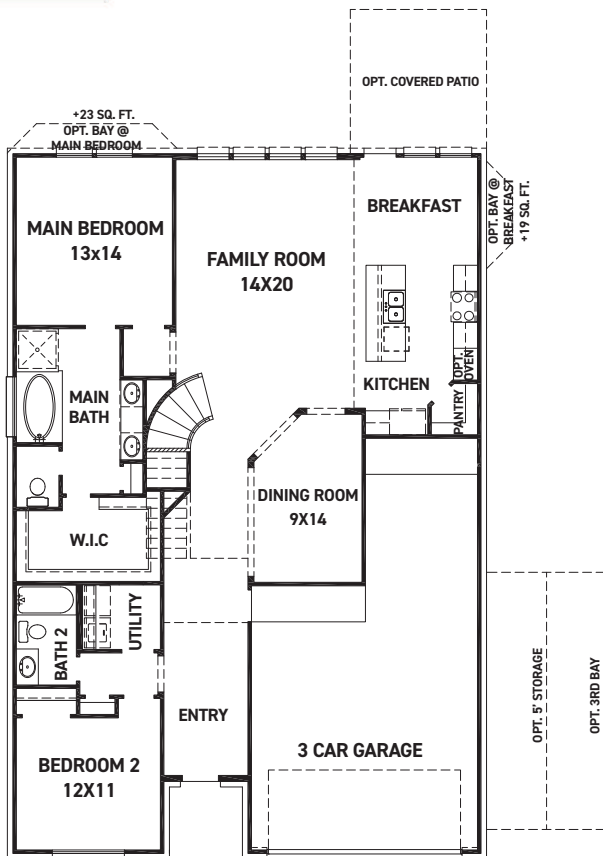


These drawings are conceptual only and are for the convenience of reference. They should not be relied upon as representations, express or implied, of the final detail of the residences. The builder expressly reserves the right to make modifications, revisions, and changes it deems desirable in its sole and absolute discretion. Dimensions and square footages are approximate and may vary with actual construction. Due to design and footage requirements not all options/elevations are available in all locations.

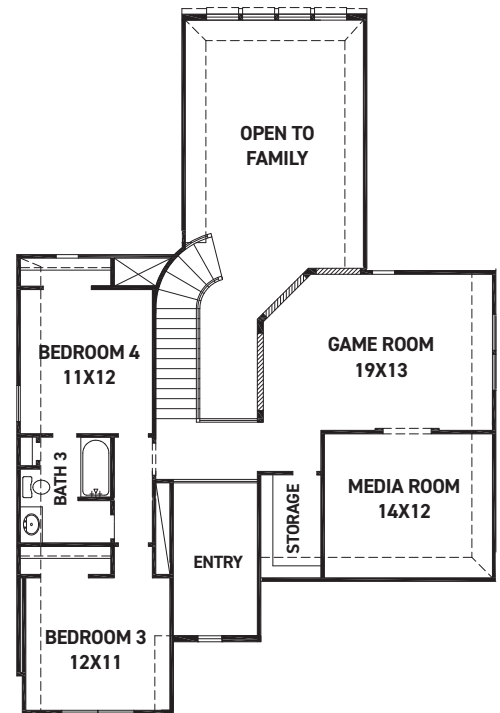


newmarkhomes.com

July 27, 2024



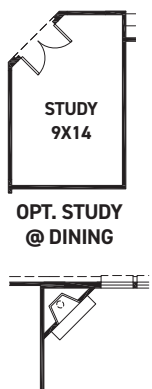
FIRST FLOOR PLAN



SECOND FLOOR PLAN

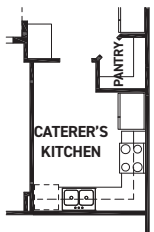
FEATURES:

- 2,762 SQUARE FT.
- 4 BEDROOM
- 3 BATHROOM
- 3 CAR GARAGE

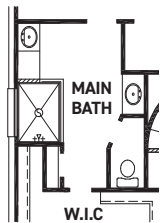


OPT. STUDY @ DINING

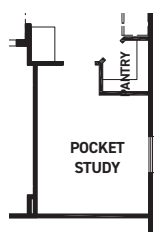
OPT. FIREPLACE



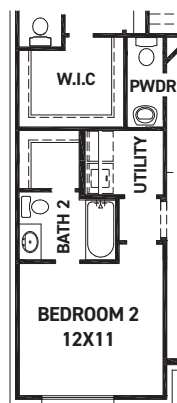
OPT. CATERER'S KITCHEN +118 SQ. FT.



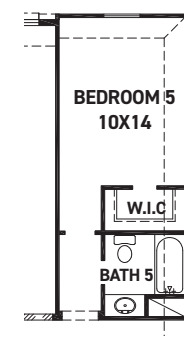
OPT. ENLARGED MAIN SHOWER



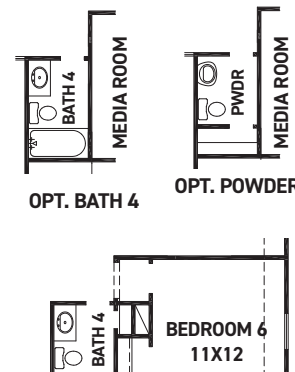
OPT. POCKET STUDY +118 SQ. FT.



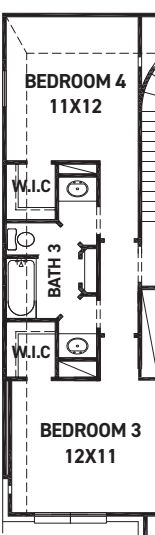
OPT. ENSUITE @ BEDROOM 2 W/ POWDER



OPT. BEDROOM 5 W/ BATH 5 +235 SQ. FT.



OPT. BEDROOM 6 W/ BATH 4



OPT. JACK & JILL +42 SQ. FT.

REV 07/23 (5016)



These drawings are conceptual only and are for the convenience of reference. They should not be relied upon as representations, express or implied, of the final detail of the residences. The builder expressly reserves the right to make modifications, revisions, and changes it deems desirable in its sole and absolute discretion. Dimensions and square footages are approximate and may vary with actual construction. Due to design and footage requirements not all options/elevations are available in all locations.



newmarkhomes.com