



Lower Interest Rates Available!

Flex Allowance to use YOUR way on select Quick Delivery Homes

Just Reduced



8010 Corrigan Pass

Austin, TX 78744 | MLS #7423001

\$584,990

	Beds	Baths	Stories	Garage
2,420	4	3.5	1	2

This move-in ready home is waiting for you! With up to \$10,000 in closing cost contributions through our preferred lender, seizing this opportunity is a must. Step into luxury with this beautiful 4 bed/3.5 bath/2-car garage, 1-story ho... [READ MORE »](#)

Plan Your Visit

Easton Park Charm Plan
Charm Plan
7804 Skytree Drive
Austin, TX 78744

MODEL HOME HOURS
Monday to Saturday: 10 a.m. - 6 p.m.
Sunday: 12 p.m. - 6 p.m.

Community Sales Manager
Carlos Fermin
(281) 428-6713
cfermin@newmarkhomes.com



ELEVATION 1



ELEVATION 2



ELEVATION 3

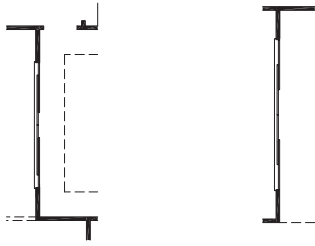
REV 07/23 (Q)



These drawings are conceptual only and are for the convenience of reference. They should not be relied upon as representations, express or implied, of the final detail of the residences. The builder expressly reserves the right to make modifications, revisions, and changes it deems desirable in its sole and absolute discretion. Dimensions and square footages are approximate and may vary with actual construction.



newmarkhomes.com

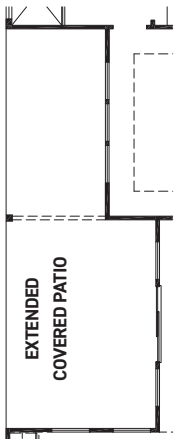


OPT. SLIDING DOORS @ MAIN BEDROOM

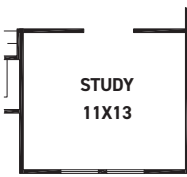
OPT. SLIDING DOORS @ FAMILY



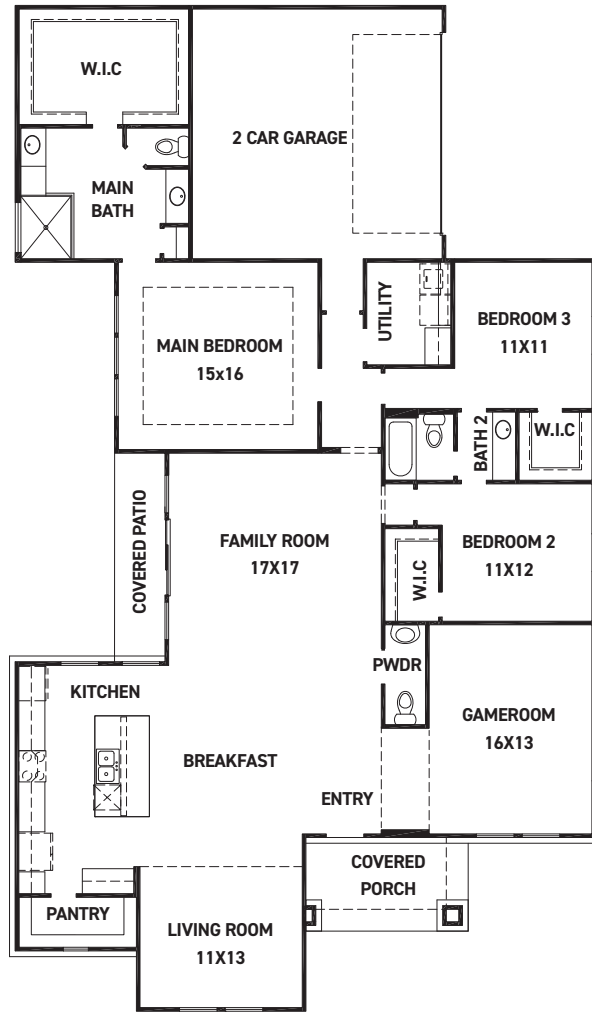
KITCHEN OPT. SLIDING DOORS @ KITCHEN



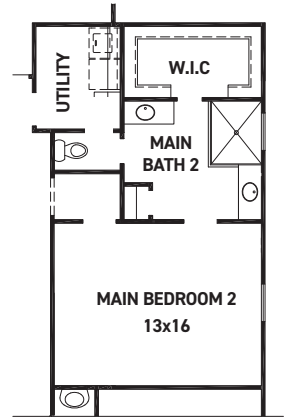
OPT. EXTENDED COVERED PATIO



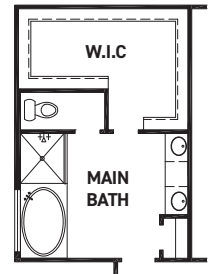
OPT. STUDY @ LIVING



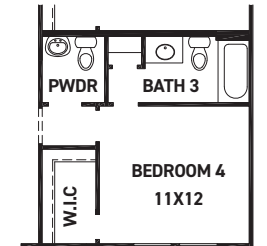
FIRST FLOOR PLAN



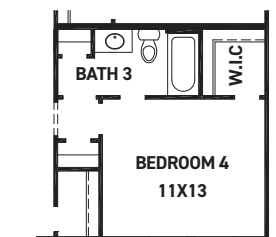
OPT. 2ND MAIN BEDROOM W/ MAIN BATH 2



OPT. TUB @ MAIN BATH



OPT. BEDROOM 4, BATH 3, & POWDER



OPT. BEDROOM 4 W/ BATH 3 ILO GAME ROOM

FEATURES:

- 2,386 SQUARE FT.
- 3 BEDROOM
- 2 1/2 BATHROOM
- 2 CAR GARAGE

REV 07/23 (Q)



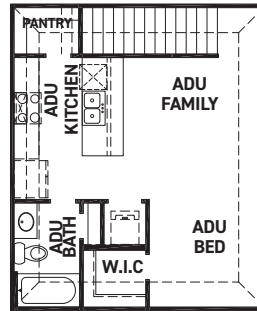
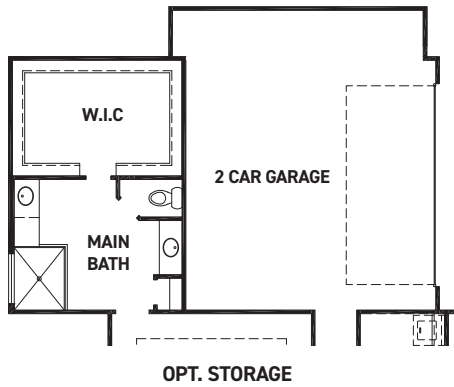
These drawings are conceptual only and are for the convenience of reference. They should not be relied upon as representations, express or implied, of the final detail of the residences. The builder expressly reserves the right to make modifications, revisions, and changes it deems desirable in its sole and absolute discretion. Dimensions and square footages are approximate and may vary with actual construction.



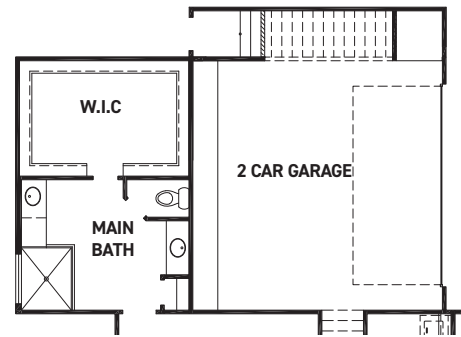
newmarkhomes.com



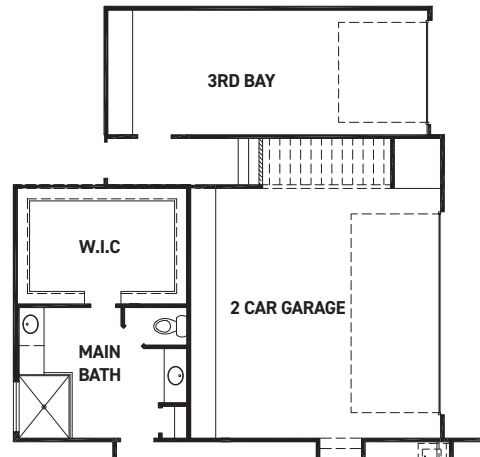
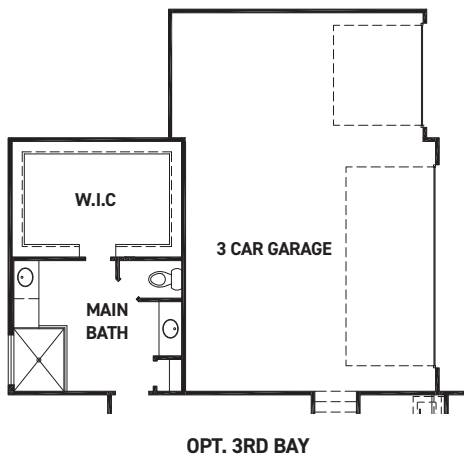
Charisma



OPT. A.D.U
+506 SQ. FT.



OPT. FIRST FLOOR W/ A.D.U



OPT. FIRST FLOOR W/ A.D.U
& 3RD BAY

REV 07/23 (Q)



These drawings are conceptual only and are for the convenience of reference. They should not be relied upon as representations, express or implied, of the final detail of the residences. The builder expressly reserves the right to make modifications, revisions, and changes it deems desirable in its sole and absolute discretion. Dimensions and square footages are approximate and may vary with actual construction.



newmarkhomes.com

July 27, 2024



REV 07/23 (Q



These drawings are conceptual only and are for the convenience of reference. They should not be relied upon as representations, express or implied, of the final detail of the residences. The builder expressly reserves the right to make modifications, revisions, and changes it deems desirable in its sole and absolute discretion. Dimensions and square footages are approximate and may vary with actual construction.



newmarkhomes.com

July 27, 2024